

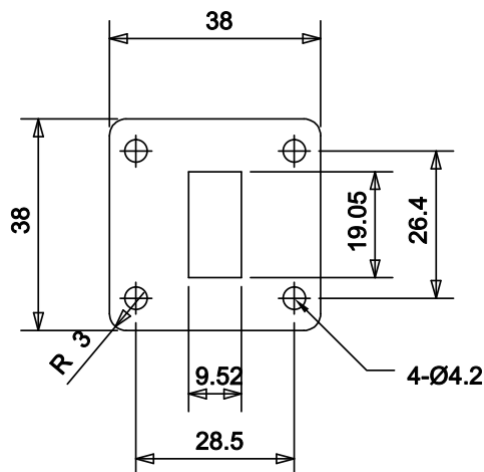
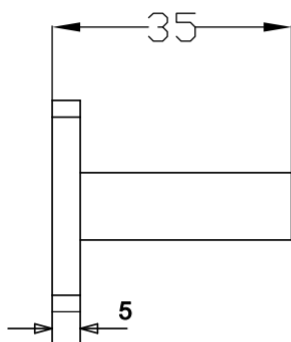
Electrical

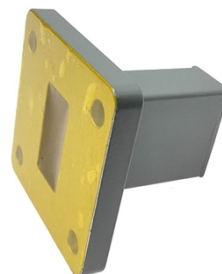
Impedance	50 ohm
Frequency Range	9.84-15.0 GHz
VSWR	1.2 max
Input Avg Power	20 Watts @ 25°C
Operating Temperature	-40°C~+70°C

Mechanical

Waveguide Size	WR75(R120)
Flange Type	IEC: UBR120
Waveguide Material	Aluminum
Waveguide Finish	Grey painted

Dimensions(mm)





Typical Test Data

