



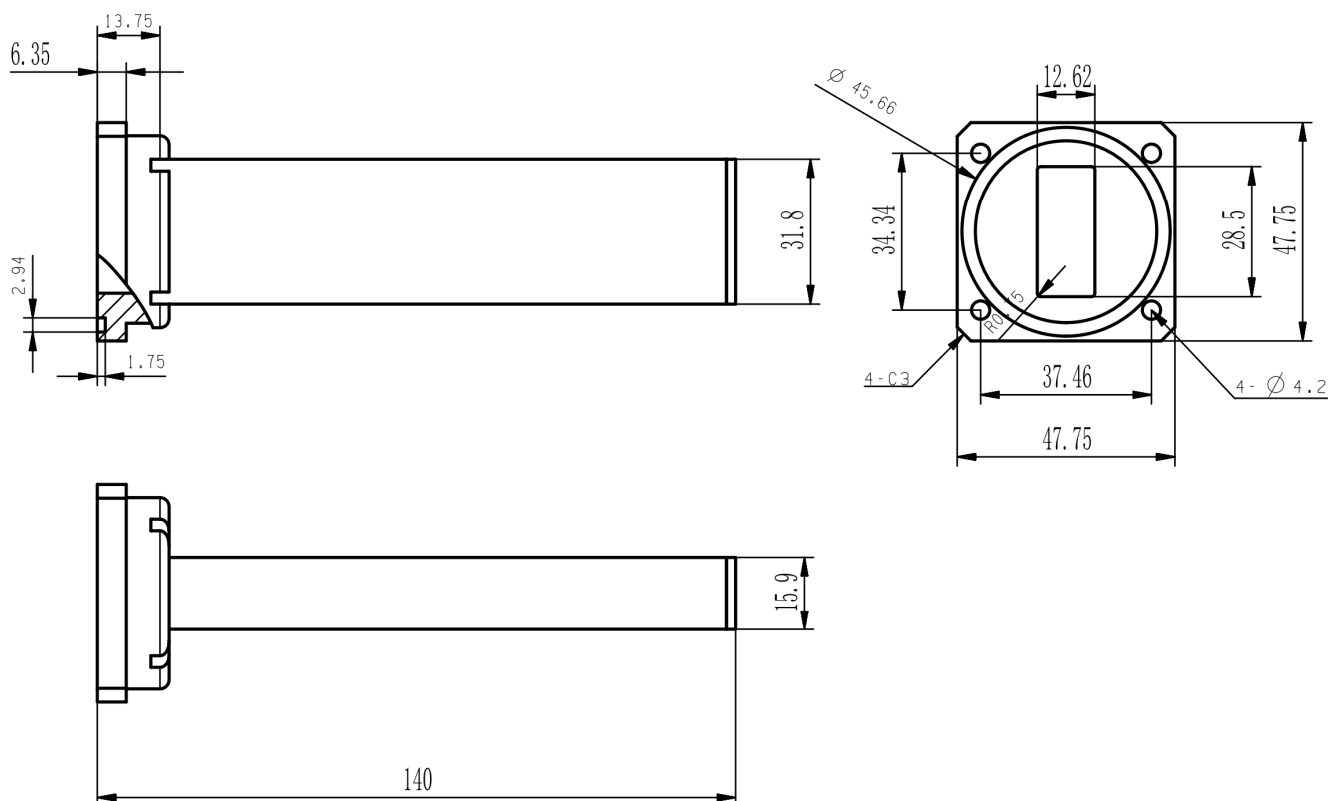
#### Electrical

Impedance	50 ohm
Frequency Range	6.57-9.99 GHz
VSWR	1.03 max
Input Avg Power	2 Watts @ 25°C
Operating Temperature	-40°C~+70°C

#### Mechanical

Waveguide Size	WR112(R84)
Flange Type	IEC: PBR84
Waveguide Material	Aluminum
Waveguide Finish	Grey painted

#### Dimensions(mm)





## Typical Test Data

