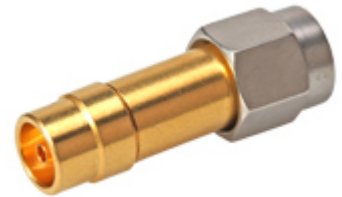


Between Series Adaptor 33_SMA-MBX-50-1/11-_N

Description

Adaptor plug/jack
SMA plug (male) / MBX jack (female)

Interface standards
Series SMA - IEC 60169-15_MIL-STD-348A/310_CECC 22110
Series MBX - HUBER+SUHNER MBX



Technical Data

Electrical Data

Impedance	50 Ω
Interface frequency max.	6 GHz
Frequency range	DC to 6 GHz
Return loss	≥ 28 dB

Mechanical Data

Number of matings	500
Weight	0.005181 kg

Environmental Data

Operating temperature	-55 °C to 155 °C
2011/65/EU (RoHS - including 2015/863 and 2017/2102)	compliant

Material Data

Interface - SMA plug (male)

Piece Parts	Material	Surface Plating
Centre contact	Copper Beryllium Alloy	SUCOPRO Plating
Outer contact	Bronze	SUCOPRO Plating
Body	Bronze	SUCOPRO Plating
Insulator	PFA / PTFE	
Coupling nut	Stainless Steel	

Interface - MBX jack (female)

Piece Parts	Material	Surface Plating
Centre contact	Copper Beryllium Alloy	SUCOPRO Plating
Outer contact	Bronze	SUCOPRO Plating
Body	Bronze	SUCOPRO Plating
Insulator	PTFE / LCP	

Related Documents

Outline drawing	DOU-00146087
-----------------	--------------

Ordering Information

Single package	33_SMA-MBX-50-1/11-_NE
----------------	------------------------