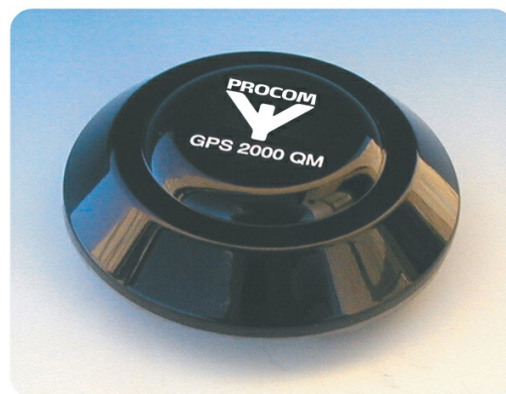


Active Receiving Antenna for the 1575 MHz NAVSTAR GPS Satellite Navigational System for Landmobile Use

DESCRIPTION

- Flat-pack GPS-antenna for fixed installations.
- Full hemispherical coverage.
- Built-in high gain, low noise amplifier.
- Right-Hand Circular Polarisation (RHCP).
- 5 V supply voltage (3 V respectively 12 V available on request).
- DC supply via RF-connector.
- EMC tested to IEC 801 and IEC 255.
- Provided with FME-female connector.
- Wide range of FME-accessories available.
- Double-adhesion procedure ensures fast and reliable fixing.



ORDERING

Model	Product No.
GPS 2000 QM	112000037

SPECIFICATIONS

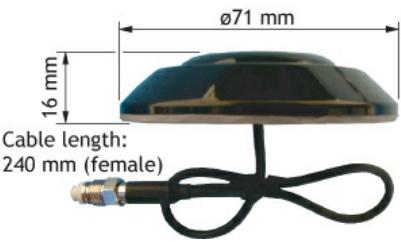
Electrical	
Model	GPS 2000 QM
Frequency	1575 MHz
Antenna Type	Active patch antenna
Polarisation	Circular
Pattern Type	Hemispherical
Impedance	50 Ω
Axial Gain	28 dBi (typ.)
Cross Polar Attenuation	> 10 dB (typ.)
Selectivity	> 45 dB down @ +/- 45 MHz

Mechanical	
Connection(s)	FME(f)
Materials	Cu-nite brass Seawater resistant Lexan
Colour	Black
Dimensions	71 mm diameter
Height	16 mm / 0.63 in.
Weight	0.09 kg / 0.20 lb
Mounting	10 mm dia. hole

GPS Antenna	
P1dB (GPS Amplifier)	Approx. +7 dBm
Gain (GPS Amplifier)	> 30 dB (typ.)
VSWR (GPS Amplifier)	< 2.0:1
Power Supply (GPS)	5 ± 0.5 VDC (3 V resp. 12 V on request)
Current Consumption (GPS Amplifier)	0.02 mA

Environmental	
Operating Temperature Range	-30°C to +70°C

ADDITIONAL DATA



FME-SYSTEM ACCESSORIES

FME-CABLES	
TYPE	PRODUCT NO.
1 m FME(f)	130000437
2 m FME(f)	130000447
3 m FME(f)	130000457
4 m FME(f)	130000466
5 m FME(f)	130000474
6 m FME(f)	130000483
4 m FME-white(f)	110000064
6 m FME-white(f)	110000066
12 m FME-white(f)	110000068
18 m FME-white(f)	110000069

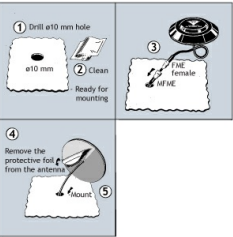
FME-CONNECTORS	
TYPE	PRODUCT NO.
FME(f)-FME(f)	130000583
FME(m)-P(m) (Prolongation)	130000565
FME(m)-N(m)	130000571
FME(m)-FSMA (Female-SMA)	130000578
FME(m)-BNC(m)	130000566
FME(m)-TNC(m)	130000569
FME(m)-UHF(m)	130000572
FME(m)-MUHF(m) (Mini-UHF)	130000573
FME(m)-EMUHF(m) (Elbow-MUHF)	130000582
FME(m)-EBNC(m) (Elbow-BNC)	130000580
FME(m)-ETNC(m) (Elbow-TNC)	130000581
FME(m)-SMA(m)	130000577

For further information about other types of FME-cables and FME-connectors, please compare the cable and connector data sheets under accessories.

1. BEFORE INSTALLATION

➤ Environmental and car temperature must be above 15° C at installation, and installation surface must be dry and clean.

2. INSTALLATION

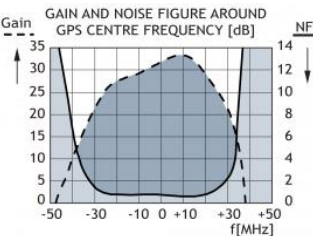
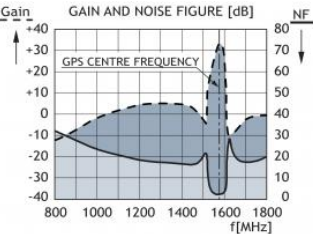


Do not use sealer on rubber gasket or other places.

3. ADHESION ADVICE

- > It is essential for a good adhesion result that the surface is properly cleaned and dry.
- > A high application pressure improves the binding power.
- > Ideal application temperature range is +20° C to +38° C but may be extended down to +15° C. When applied binding strength is maintained between -30° C and +70° C.

TYPICAL RESPONSE CURVES



VERTICAL RADIATION PATTERN

