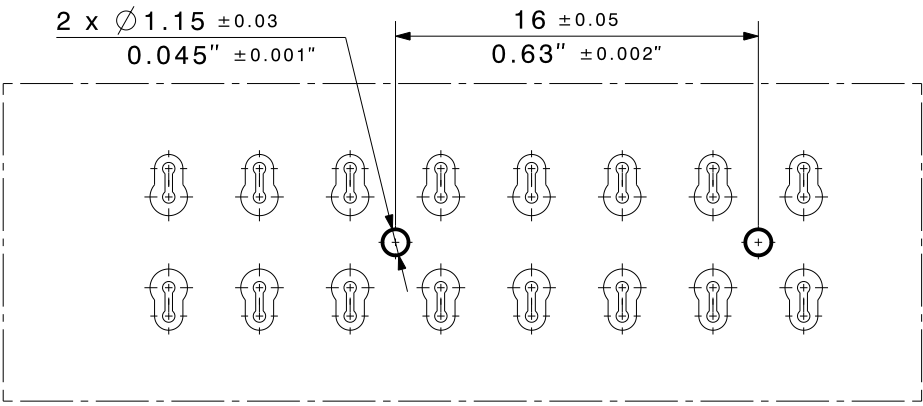
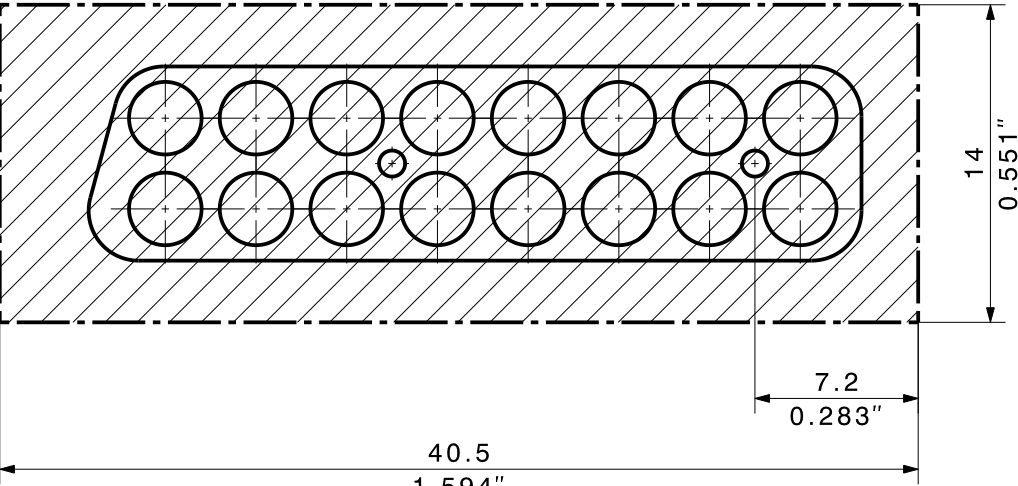


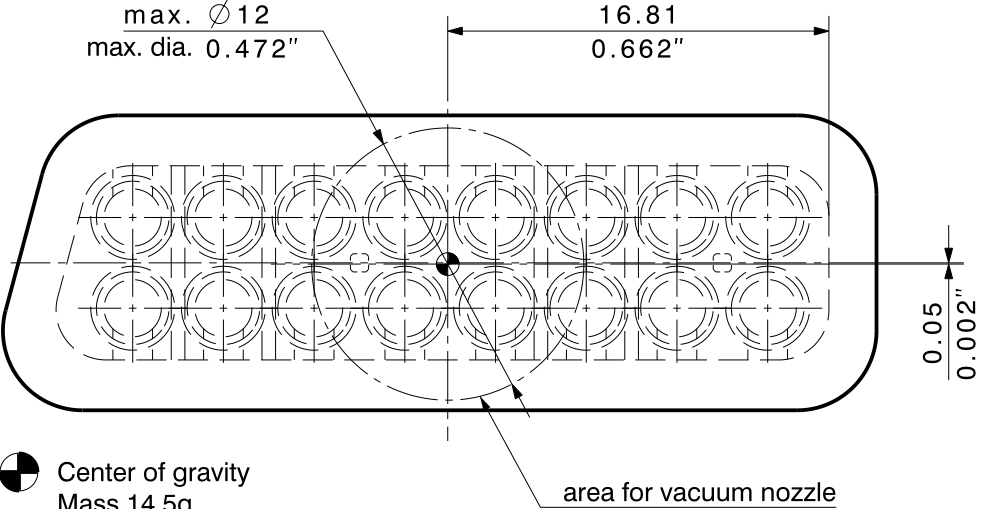
Optimized PCB layouts for different board material/stack-up on request.
Please contact HUBER+SUHNER.

Minimal space needed for coupling of counter part.
Do not place other parts closer than marked area!



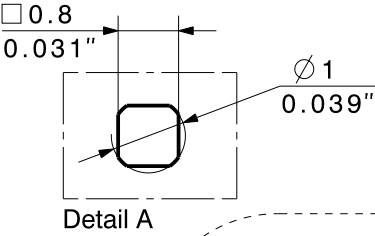
Mounting hole

top view

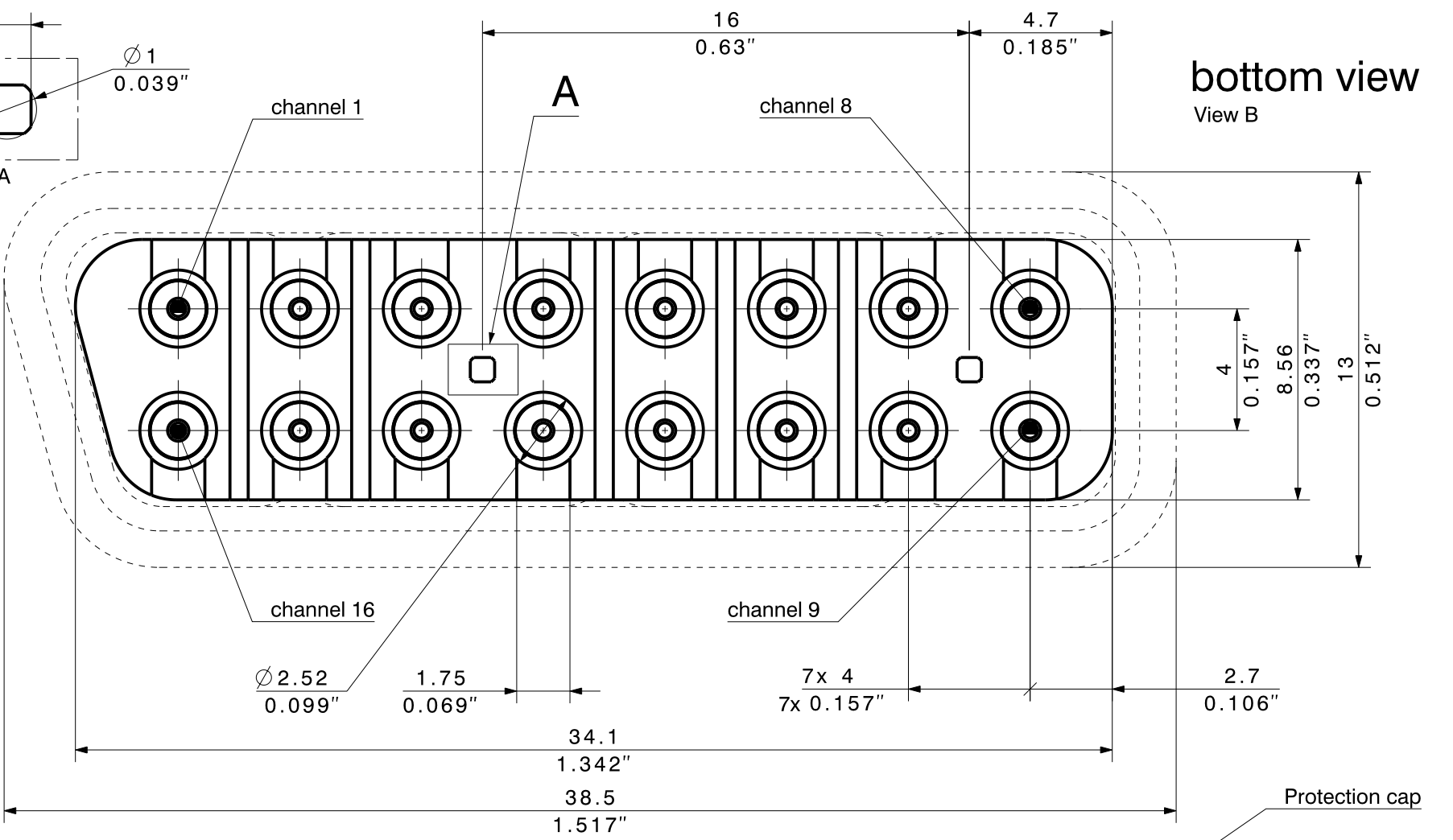


Center of gravity
Mass 14.5g

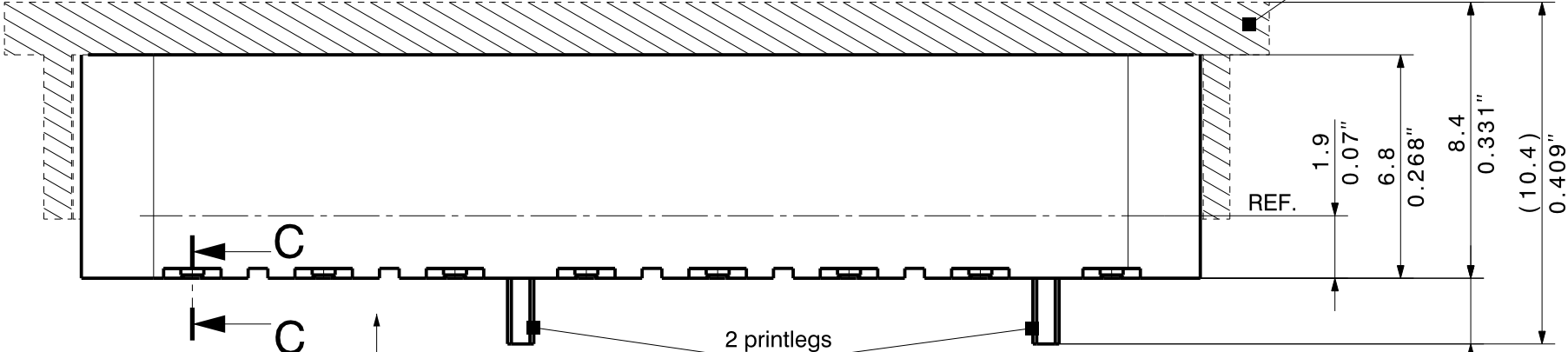
area for vacuum nozzle



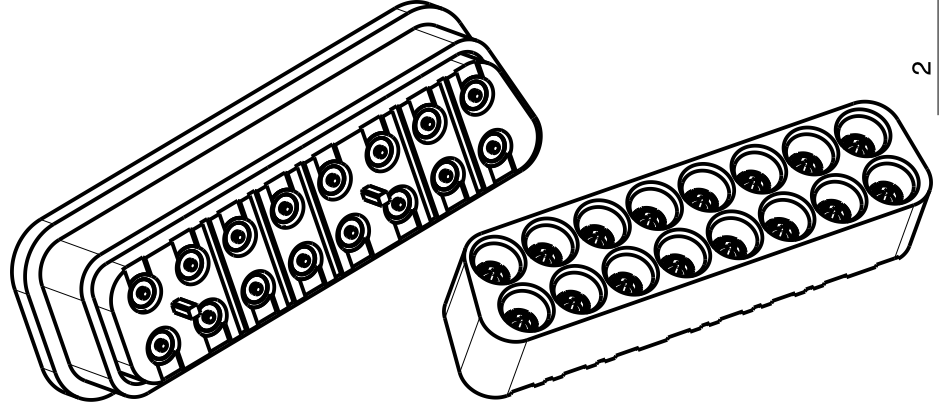
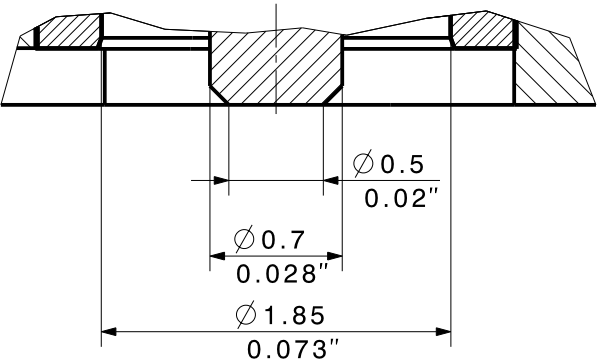
Detail A



bottom view
View B



Section view C-C



type / Typ: 2x8A_81_MXP-S50-0-1	part no. / Teile Nr.: PRO-00127366	G sheet/Blatt
description / Beschreibung: PCB plug	drawing-no. / Zeichnungsnr.: DOU-00127366	Release: H
alternative ID:		

Diese Zeichnung ist unser geistiges Eigentum und darf ohne unsere Einwilligung weder kopiert, vervielfältigt noch Dritten oder Konkurrenzunternehmen zugänglich gemacht werden. (Art. 12 B.G.)
This drawing is copyright. Information contained thereon is supplied in confidence and must not be used for any other purpose than which it was supplied, or be reproduced without written permission of the owners.