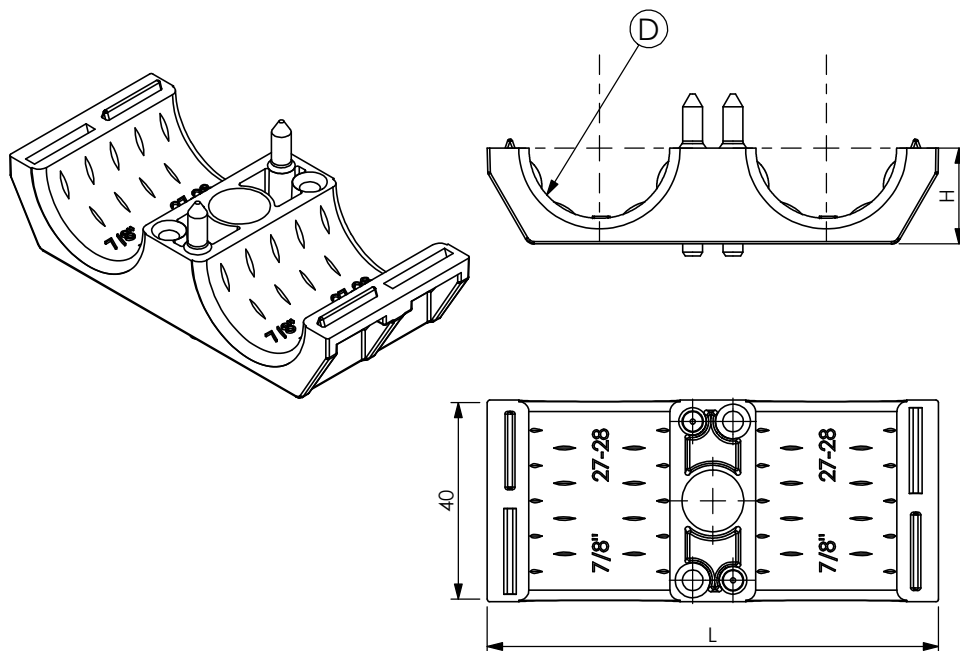


PRODUCT DATA SHEET



A) SPECIFICATIONS

P.P. U.V. resistant

B) RESISTANCE TESTS

Operating temperature: -30°C + 120°C



C) PACKAGING INFORMATION

Packing in boxes.
Label indicating:
product code, article, quantity,
production batch,
FIMO logo and figure.
(Customer code on request).

D) MOUNTING INSTRUCTIONS

On request

| CODE | ARTICLE | ø D | H | L | BAG | BOX | WEIGHT |
|--------------|----------------------|---------|------|-----|-----|-----|--------|
| 61 3307 5007 | SAB/ 2x7 | 5 - 7 | 10.5 | 56 | 20 | 500 | 14 |
| 61 3307 5009 | SAB/ 2x9 | 8 - 9 | 10.5 | 56 | 20 | 500 | 14 |
| 61 3307 5011 | SAB/ 2x11 | 10 - 11 | 10.5 | 56 | 20 | 500 | 14 |
| 61 3307 5013 | SAB/ 2x13 | 12 - 13 | 13.5 | 68 | 20 | 500 | 18 |
| 61 3307 5014 | SAB/ 2x1 1/2" S (14) | 13 - 14 | 13.5 | 68 | 20 | 500 | 18 |
| 61 3307 5038 | SAB/ 2x3/8" (16) | 15 - 16 | 13.5 | 68 | 20 | 500 | 18 |
| 61 3307 5012 | SAB/ 2x1/2" (17) | 16 - 17 | 13.5 | 68 | 20 | 500 | 18 |
| 61 3307 5058 | SAB/ 2x5/8" (23) | 21 - 23 | 19 | 90 | 20 | 100 | 25 |
| 61 3307 5078 | SAB/ 2x7/8" (28) | 27 - 28 | 19 | 90 | 20 | 100 | 25 |
| 61 3307 5118 | SAB/ 2x1.1/8" (38) | 36 - 38 | 27 | 114 | 20 | 100 | 30 |
| 61 3307 5114 | SAB/ 2x1.1/4" (40) | 39 - 40 | 27 | 114 | 20 | 100 | 30 |
| 61 3307 5148 | SAB/ 2x1.5/8" S (49) | 48 - 49 | 33 | 137 | 20 | 100 | 40 |
| 61 3307 5158 | SAB/ 2x1.5/8" (52) | 50 - 52 | 33 | 137 | 20 | 100 | 40 |

| RI | DATE | DR | DATE | AP | Description: |
|--|----------|------|----------|---|--|
| 02 | | | | | |
| 01 | | | | | |
| 00 | 15/12/16 | G.S. | 15/12/16 | A.V. | |
| 1 ST EMISSION | | | | | |
|  | | | |  | <p>SAB - Calibrated Twin Saddles</p> <p>The internal indentation allows gripping on the cable without compressing nor deforming it. The fitting of the two saddles is calibrated and corresponds to the diameter of the coaxial cables.</p> |