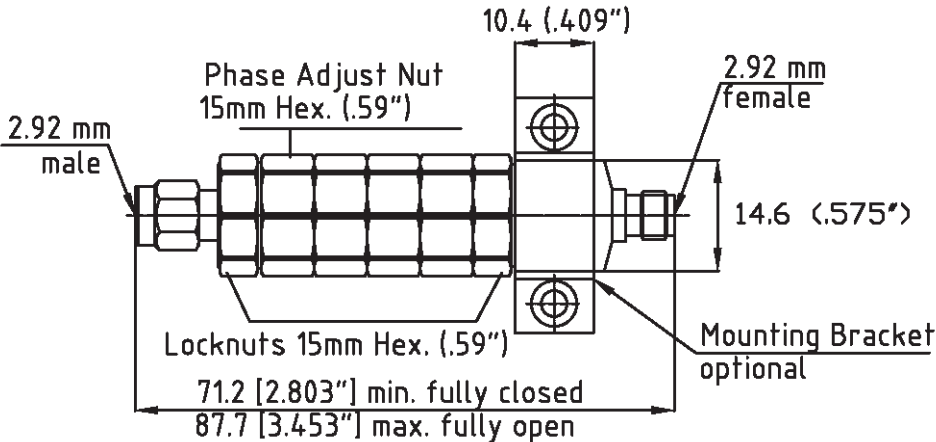
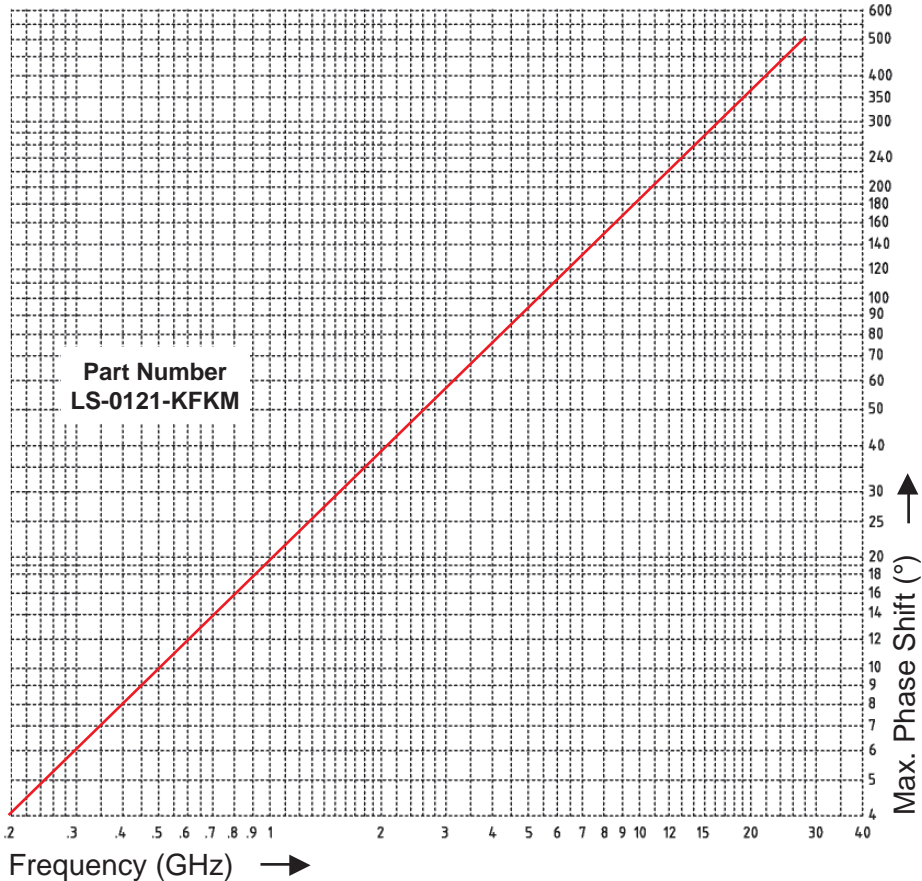


- Precision phase adjustable adapters, DC to 28.0 GHz.
 - Impedance of 50 Ohms is maintained over the full adjustment range.
 - High power solution available.
 - Positive resettable locking mechanism.
 - Smooth continuous phase adjustment.
 - Physical length change of the unit equals the electrical length change.
 - Rugged construction, housing and outer conductors are made from stainless steel.
 - Captivated center contacts
- Spring fingers and center contacts are made from beryllium copper, heat treated and gold plated per ASTM-B-488; Type III Code C
 - 2.92mm connector interface specification per MIL-STD-348A.
 - Operating temperature range: -54°C to +115°C, units with extended temperature range are available on request.

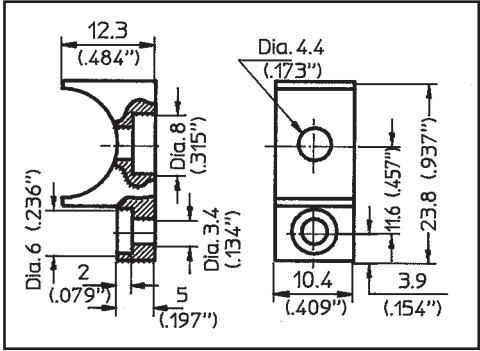


Part Number	Frequency Range	VSWR max.	Insertion Loss max.	Phase Shift min.	No. of Turns	Nom. Phase Shift Deg./GHz/ Turn	Time Delay (psec.) min. max.	Weight max.
LS-0121-KFKM	DC - 28.0 GHz	1.25:1	0.6 dB	510° at 28.0 GHz	16.5	1.2	288 343.1	65 g



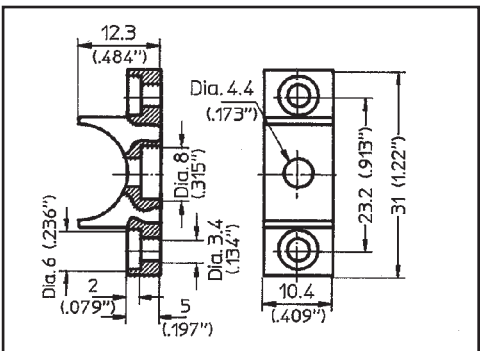
Two different Mounting Brackets are offered. They can easily be added to any Precision Phase Adjuster. Using these standard attachments makes it easy to mount the Phase Shifter in the system or to the test setup and ensures proper operation.

mounting at both sides



Bracket, Part No.: MB-0200-07
Material: Aluminum iridited

mounting at only one side



Bracket, Part No.: MB-0100-07
Material: Aluminum iridited