

Bi-directional Power Monitors

DESCRIPTION

- Compact bi-directional power monitor for the frequency range 140 - 470 MHz.
- PRO-PM2-2/70 is adjusted to give 2 V ±0.5 V at 470 MHz and 1 W input power.
- Typical values of the TX FWD DC voltage as a function of frequency at 1W input power is shown in the figure below.
- The technology used can generate 2. harmonic. Therefore, it is recommended to use low pass filtering on the output.



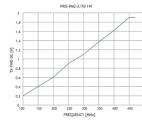
ORDERING

Model	Product No.
PRO-PM2-2/70-1W-N(f)-N(f)	210000972

SPECIFICATIONS

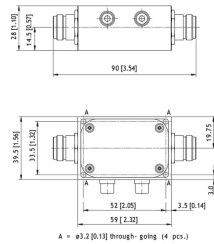
Electrical	
Model	PRO-PM2-2/70-1W
Frequency	140 - 470 MHz
Max. Input Power	1 W
Insertion Loss	Typ. 0.1 dB < 0.3 dB
Impedance	50 Ω
VSWR	< 1.25:1
Mechanical	
Connection(s)	N(f)
Dimensions	90 x 39.5 x 28 mm / 3.54 x 1.56 x 1.10 in.
Weight	Approx. 0.15 kg / 0.33 lb.
Environmental	
Operating Temperature Range	-30 to 60 °C

TYPICAL RESPONSE CURVES



The maximum TX FWD DC voltage can be adjusted, if necessary. In that case, new DC voltage vs. power curves must be made again.

MOUNTING DETAILS



All dimensions are given in mm [in.]