

Power Divider

DESCRIPTION

- > 2.5 W unequal power divider.
- > The divider covers the frequency range from 40 - 1000 MHz.
- > Very little ripple on divider output over the entire frequency range.

SPECIFICATIONS

Electrical				
Model	PRO-PDI2-40-1G-... dB-2.5W-N			
Frequency	6dB, 10dB, 15dB: 40 - 1000 MHz 20dB: 40-2000MHz			
Max. Input Power	2.5 W (3 W)			
Coupling	6 dB	10 dB	15 dB	20 dB
Impedance	50 Ω			
Input VSWR	< 1.5:1			< 1.5:1 @ 2G < 2
Nominal Divider Loss	1.25 dB	0.45 dB	0.45 dB	0.4 dB
Total Loss	2.3 dB @ 40 MHz 2.75 dB @ 1000 MHz	1.4 dB @ 40 MHz 2.2 dB @ 1000 MHz	1.4 dB @ 40 MHz 2.2 dB @ 1000 MHz	0.9 dB @ 40 MHz 1.1 dB @ 2G < 1.4 @ 1000 MHz
Isolation Between Outputs	10 dB	12 dB	16 dB	18 dB
Divider Output	-6.5 - 0.5 +1 dB	-10 ± 0.5 dB	-15 ± 0.5 dB	-20 ± 1 dB
No. of Channels	2			

Mechanical	
Connection(s)	N(f) (BNC(f), TNC(f), UHF(f) or SMA(f) on request)
Dimensions	89 x 56 x 29 mm (incl. connectors) / 3.50 x 2.20 x 1.14 in.
Weight	0.145 kg / 0.32 lb.

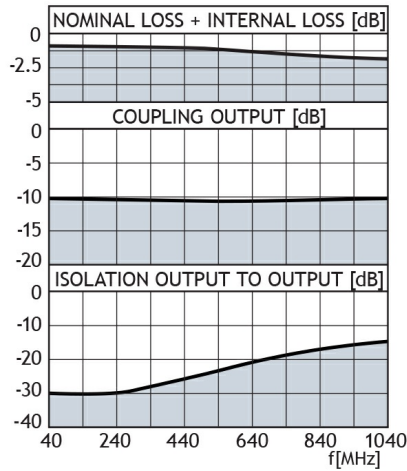
Environmental	
Operating Temperature Range	-30°C to +60°C

ORDERING

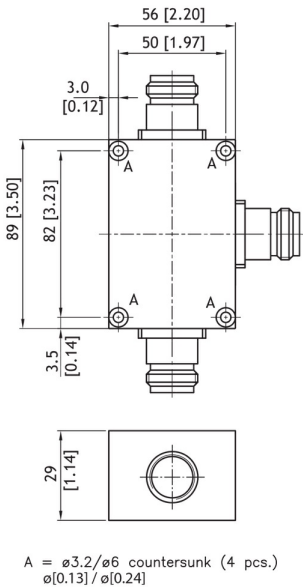
Model	Product No.	Description
PRO-PDI2-40-1G(2G)-N, 2.5..	210001060	COUPLING: 6 dB
PRO-PDI2-40-1G(2G)-N, 2.5..	210000437	COUPLING: 10 dB
PRO-PDI2-40-1G(2G)-N, 2.5..	210001020	COUPLING: 15 dB
PRO-PDI2-40-1G(2G)-N, 2.5..	210000994	COUPLING: 20 dB



TYPICAL RESPONSE CURVE



MOUNTING DETAILS



All dimensions are given in mm [in.]