

Waveguide to Coaxial Adapter AWR75SMA

WR75 to SMA Female, Square Cover Flange, Right Angle



Rev 4

Electrical

| | |
|-----------------|-------------|
| Frequency Range | 9.84-15 GHz |
| VSWR | 1.2 max |
| Insertion Loss | 0.25dB max |

Configuration

| | | |
|----------------|---------------|--|
| Waveguide Size | IEC | R120 |
| | EIA | WR75 |
| Flange Type | IEC | UBR120 |
| | North America | Al alloy: MIL3922/70-025 Cu alloy: MIL3922/70-026 |
| Coax Connector | SMA Female | |
| Body Geometry | Right Angle | |

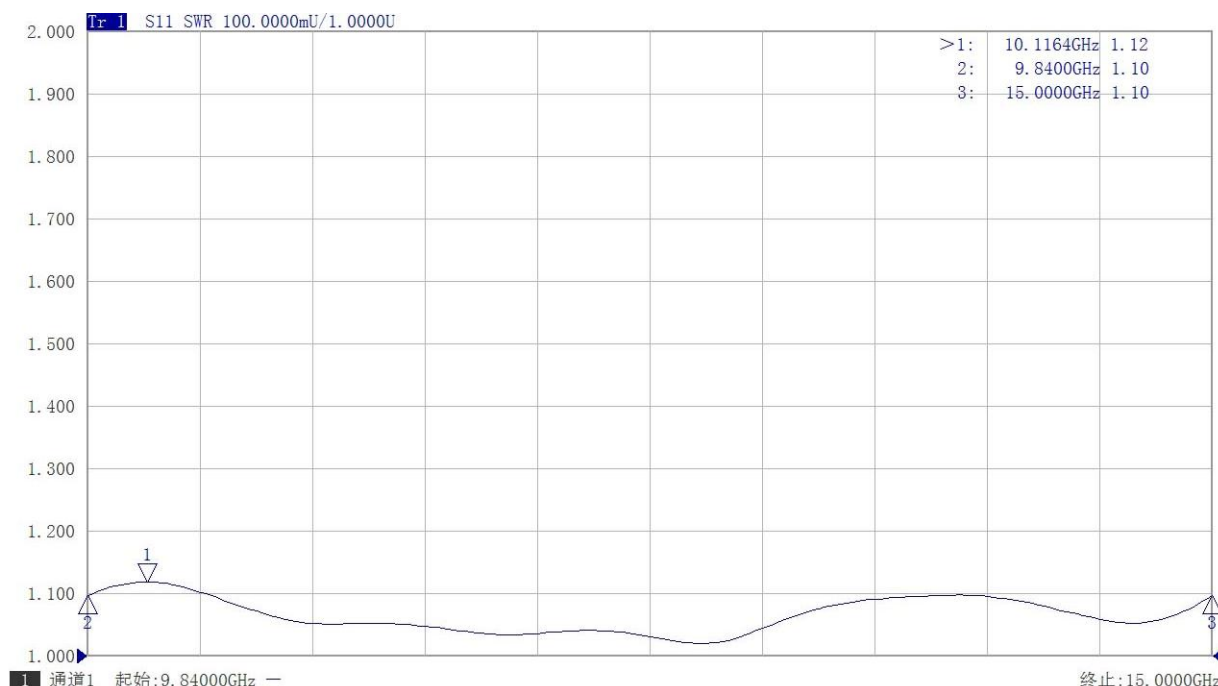
Materials

| | |
|----------------|---------------------------------|
| Waveguide Body | Aluminum, black or grey painted |
| Connector Body | Passivated stainless steel |
| Center Contact | Gold plated beryllium copper |

Mechanical & Environmental

| | |
|---------------------|-------------|
| Operating Temp | -40℃ to 70℃ |
| Connector Interface | MIL-STD-348 |
| RoHS | Compliant |

Typical Test Data



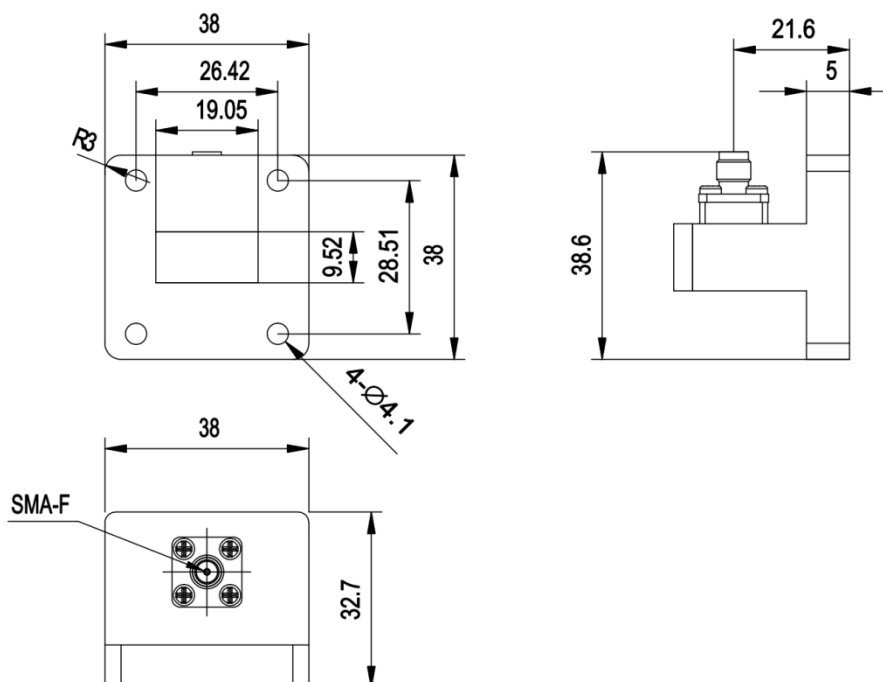
Waveguide to Coaxial Adapter AWR75SMA

WR75 to SMA Female, Square Cover Flange, Right Angle

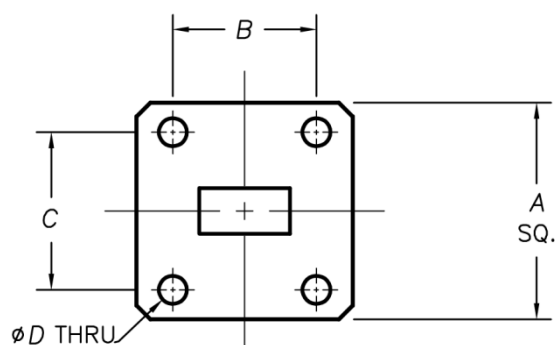


Rev 4

Dimensions(mm)



Flange Comparison (Unit mm)



| WG SIZE | CONFORMING STANDARD | A | B | C | D |
|---------|---------------------|-------|-------|-------|------|
| WR75 | RF ONE:AWR75SMA | 38 | 26.42 | 28.51 | 4.1 |
| | IEC60154:UBR120 | 38.10 | 26.42 | 28.5 | 4.00 |
| | USA:MIL3922/70-025 | 38.10 | 26.42 | 28.5 | 3.70 |

* The purpose of this size comparison is to provide a quick overview of different flange standards.

* Great care has been given nevertheless there might be a few mistakes.

* Please check the flange compatibility before ordering. Customized flanges are available.