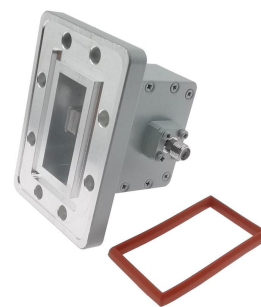


Waveguide to Coaxial Adapter **AWR137SMAG**

WR137 to SMA Female, Rectangular Grooved Flange, Right Angle



Rev1

Electrical

Frequency Range	5.37-8.17 GHz
VSWR	1.2 max

Configuration

Waveguide Size	IEC	70
	EIA	WR137
Flange Type	IEC	PDR70
	North America	CPR137G
Coax Connector	SMA Female	
Body Geometry	Right Angle	

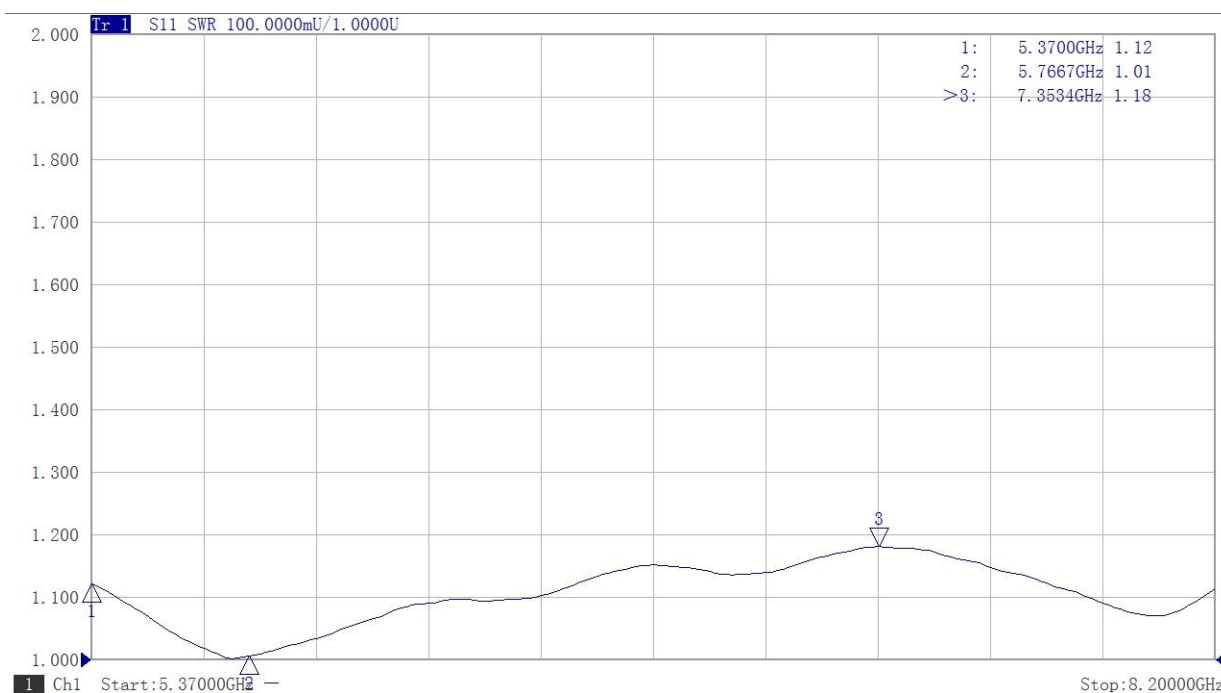
Materials

Waveguide Body	Aluminum, black or grey painted
Connector Body	Passivated stainless steel
Center Contact	Gold plated beryllium copper

Mechanical & Environmental

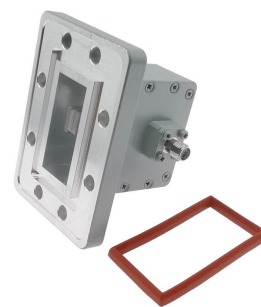
Operating Temp	-40℃ to 70℃
Connector Interface	MIL-STD-348
RoHS	Compliant

Typical Test Data



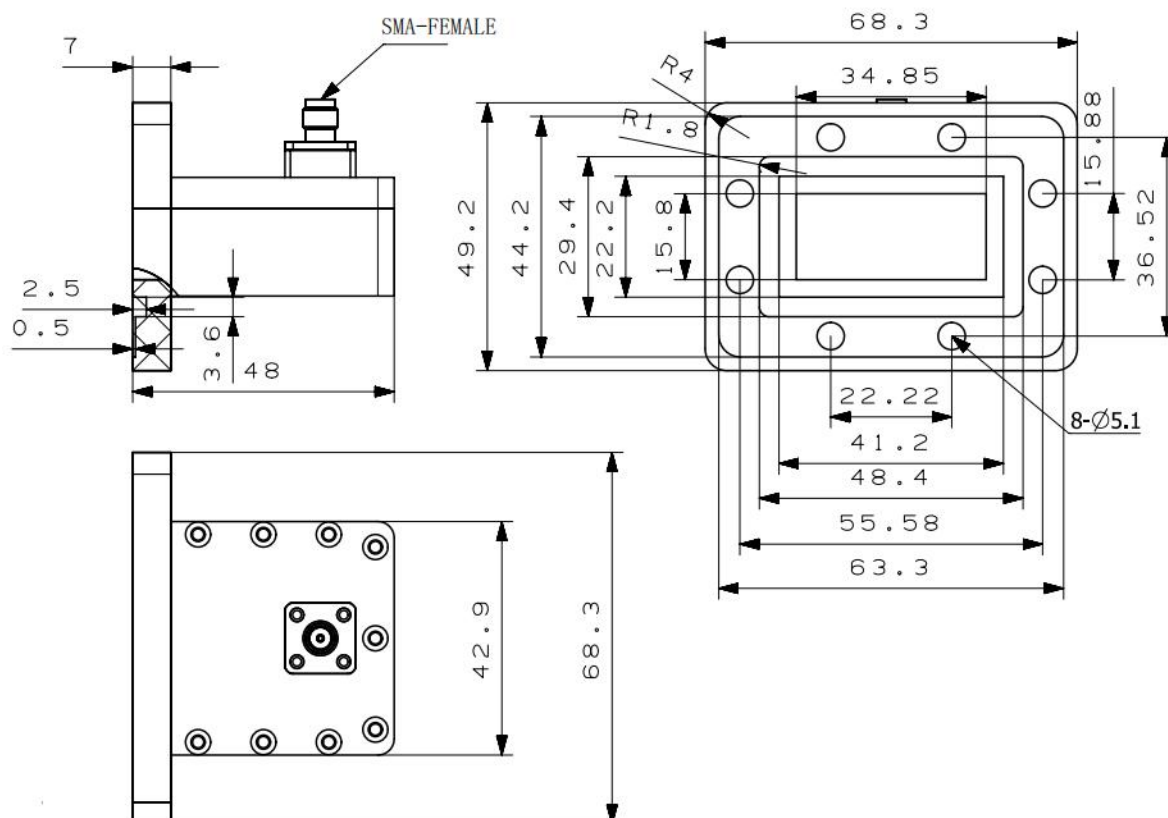
Waveguide to Coaxial Adapter **AWR137SMAG**

WR137 to SMA Female, Rectangular Grooved Flange, Right Angle

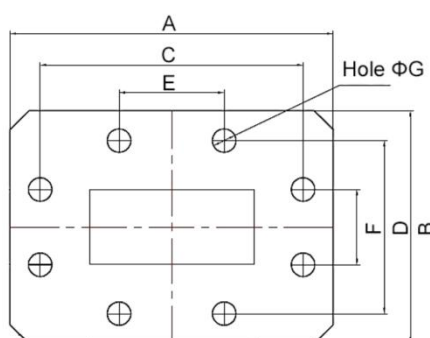


Rev1

Dimensions(mm)



Flange Comparison (Unit mm)



WG SIZE	CONFORMING STANDARD	A	B	C	D	E	F	G
WR137	RF ONE:AWR137SMAG	68.3	49.2	55.58	36.52	22.22	15.88	5.1
	IEC60154:PDR70	68.30	49.20	55.58	36.52	22.22	15.88	5.00
	USA:CPR 137G	68.26	49.21	55.58	36.52	22.22	15.88	5.03

* The purpose of this size comparison is to provide a quick overview of different flange standards.

* Great care has been given nevertheless there might be a few mistakes.

* Please check the flange compatibility before ordering. Customized flanges are available.