

Waveguide to Coaxial Adapter **AWR101EM**

WR10 to 1mm Male, Round Cover Flange, End-launch



Rev 1

Electrical

Frequency Range	73.8-110 GHz
VSWR	1.5 max

Configuration

Waveguide Size	IEC	900
	EIA	WR10
	North America	UG387/U
Coax Connector	1mm Male	
Body Geometry	End-launch	

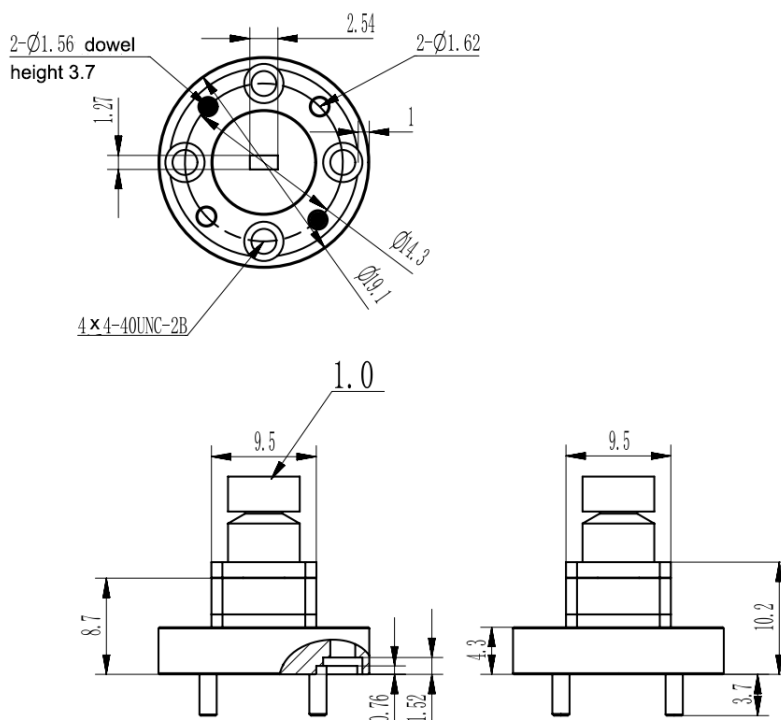
Materials

Waveguide Body	Copper, gold plated
Connector Body	Passivated stainless steel
Center Contact	Gold plated brass

Mechanical & Environmental

Operating Temp	-40°C to 70°C
Connector Interface	IEC-61169
RoHS	Compliant

Dimensions(mm)



Waveguide to Coaxial Adapter **AWR101EM**

WR10 to 1mm Male, Round Cover Flange, End-launch



Rev 1

Typical Test Data

