



# FLANN MICROWAVE

E-mail: [sales@flann.com](mailto:sales@flann.com) – Phone: +44(0)1208 77777 – Fax: +44(0)1208 76426

Waveguide to K Type Coax Adaptors Series 093-KF/KM and 094-KF

[Click here to download a PDF of this product](#)



## Features

- Low VSWR
- Models up to 40 GHz
- Manufactured from Brass or \*Aluminium

The new Series 093-KF/KM and 094-KF range of Waveguide to Coax Adaptors feature an improved mechanical design offering greater durability and reliability. Minor dimensional changes may have been incorporated; please contact our Sales Team for further information if available space is limited. Adaptors in this range are fitted with Precision 'K' type connectors and are available for frequency ranges up to 40 GHz. Narrowband models, specifically optimised and offering reduced VSWR, are also available. Male and Female connectors are offered, see table below for full details.

Model	Frequency Range (GHz)	Waveguide WG	Dimensions (mm)			VSWR (better than)	*Dimensions (Brass)		
			R	WR			A	B	C
18094-KF20	11.9 - 18.0	18	140	62		1.1	37.1	45.5	17.9
18093-KF20	11.9 - 18.0	18	140	62		1.12	37.1	45.5	17.9
19094-KF20	14.5 - 22.0	19	180	51		1.1	36.3	45.5	17

19093-KF20	14.5 - 22.0	19	180	51	1.2	36.3	45.5	17
19093-KM20	14.5 - 22.0	19	180	51	1.2	36.3	45.5	19.4
19093-KF21	20.2 - 20.8	19	180	51	1.05	36.3	45.5	19.4
20094-KF20	17.6 - 26.7	20	220	42	1.1	28.6	37	16.1
20093-KF20	17.6 - 26.7	20	220	42	1.2	28.6	37	16.1
20093-KM20	17.6 - 26.7	20	220	42	1.2	28.6	37	19.3
20093-KF21	21.2 - 23.6	20	220	42	1.1	28.6	37	16.1
20093-KM21	21.2 - 23.6	20	220	42	1.1	28.6	37	19.3
20093-KM23	23.0 - 24.0	20	220	42	1.1	28.6	37	19.3
21094-KF20	21.7 - 33.0	21	260	34	1.15	28.7	37	16.1
21093-KF20	21.7 - 33.0	21	260	34	1.25	28.7	37	16.1
21093-KM20	21.7 - 33.0	21	260	34	1.25	28.7	37	18.8
21093-KF22	24.5 - 27.0	21	260	34	1.1	28.7	37	16.1
22094-KF20	26.4 - 40.1	22	320	28	1.15	28.4	36.5	15.7
22093-KF20	26.4 - 40.1	22	320	28	1.2	28.4	36.5	15.7
22093-KM20	26.4 - 40.1	22	320	28	1.2	28.4	36.5	17.9
22093-KF22	37.0 - 39.5	22	320	28	1.1	28.4	36.5	15.7
22093-KF23	27.0 - 29.5	22	320	28	1.1	28.4	36.5	15.7
22093-KF24**	40.5 - 42.5	22	320	28	1.3	28.4	36.5	15.7
22093-KF25	28.0 - 32.0	22	320	28	1.15	28.4	36.5	15.7
22093-KF26	33.0 - 35.0	22	320	28	1.1	28.4	36.5	15.7
22093-KF27	28.0 - 31.0	22	320	28	1.1	28.4	36.5	15.7
22093-KM21	28.0 - 28.7	22	320	28	1.15	28.4	36.5	15.7
22093-KM22	37.0 - 39.5	22	320	28	1.1	28.4	36.5	15.7
22093-KM23	27.0 - 29.0	22	320	28	1.1	28.4	36.5	15.7
22093-KM24	40.5 - 42.5	22	320	28	1.3	28.4	36.5	15.7
22093-KM25	28.0 - 32.0	22	320	28	1.15	28.4	36.5	15.7
22093-KM26	33.0 - 35.0	22	320	28	1.1	28.4	36.5	15.7

**ORDERING INFORMATION**

**Adaptor, Waveguide to Coax, Precision K Female**

Model: Frequency band and adaptor type suffix; Description

Example: Model 22094-KF20 Waveguide to K type female coax adaptor  
(Frequency Range 26.4 GHz to 40.1 GHz, VSWR 1.15)

**Adaptor, Waveguide to Coax, Precision K Male**

Model: Frequency band and adaptor type suffix; Description

Example: Model 20093-KM20 Waveguide to K Type male coax adaptor  
(Frequency Range 17.6 GHz to 26.7 GHz, VSWR 1.20)

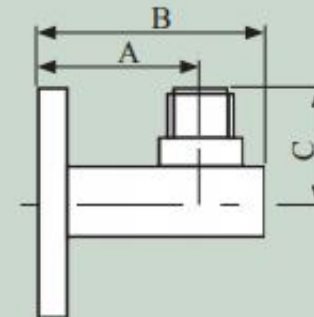
**Models optimised for narrowband applications are also available - details on request.**

If the adaptor is required to be manufactured in aluminium please suffix the order information with \AL

Example: Model 20093-KM20\AL

\*Note The dimensions of aluminium adaptors may vary from those manufactured in brass.

\*\*Note This adaptor is a special model optimised for use outside the frequency band.



Series 093-KF/KM 094-KF

Your Name (required)

Your Email (required)

Company (required)

Country (required)

Your Message

[/vc\_column][/vc\_row]