

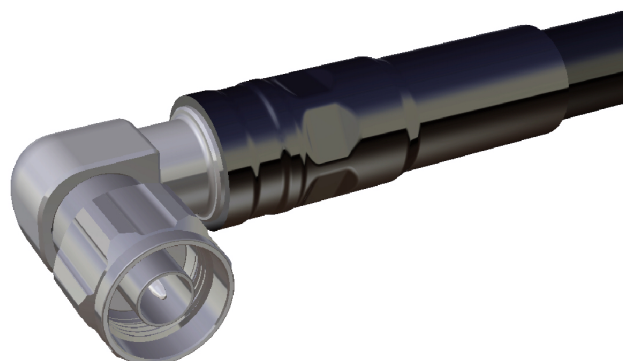
Coaxial Cable Connector 16_N-50-12-12/033_-

Description

Right angle cable plug

Interface standards

IEC 61169-4_CECC 22190_DIN 47223_VG 95250



Technical Data

Electrical Data

| | | | |
|--------------------------|-------------|------------|------------|
| Impedance | 50 Ω | | |
| Interface frequency max. | 11 GHz | | |
| Frequency range | DC to 2 GHz | 2 to 4 GHz | 4 to 6 GHz |
| Return loss | 34 dB | 31.8 dB | 31 dB |

Mechanical Data

| | |
|----------------|-------------|
| Centre contact | plugged |
| Outer contact | crimped |
| Weight | 0.082407 kg |

Environmental Data

| | |
|--|-----------------|
| Operating temperature | -40 °C to 85 °C |
| 2011/65/EU (RoHS - including 2015/863 and 2017/2102) | compliant |

Material Data

| Piece Parts | Material | Surface Plating |
|----------------|-----------------------|-----------------------|
| Centre contact | Brass | Silver Plating |
| Outer contact | Brass | SUCOPLATE (R) Plating |
| Body | Brass | SUCOPLATE (R) Plating |
| Insulator | PFA / PTFE | |
| Coupling nut | Brass | SUCOPLATE (R) Plating |
| Gasket | VMQ (Silicone rubber) | |
| Crimp ferrule | Brass | SUCOPLATE (R) Plating |

Related Documents

| | |
|----------------------|----------------|
| Outline drawing | DOU-00252206 |
| Assembly instruction | DOC-0000443228 |

Ordering Information

| | |
|----------------|----------------------|
| Single package | 16_N-50-12-50/033_-E |
|----------------|----------------------|

Additional Information

| | |
|-----------------|-----------|
| Suitable cables | SPUMA_600 |
|-----------------|-----------|