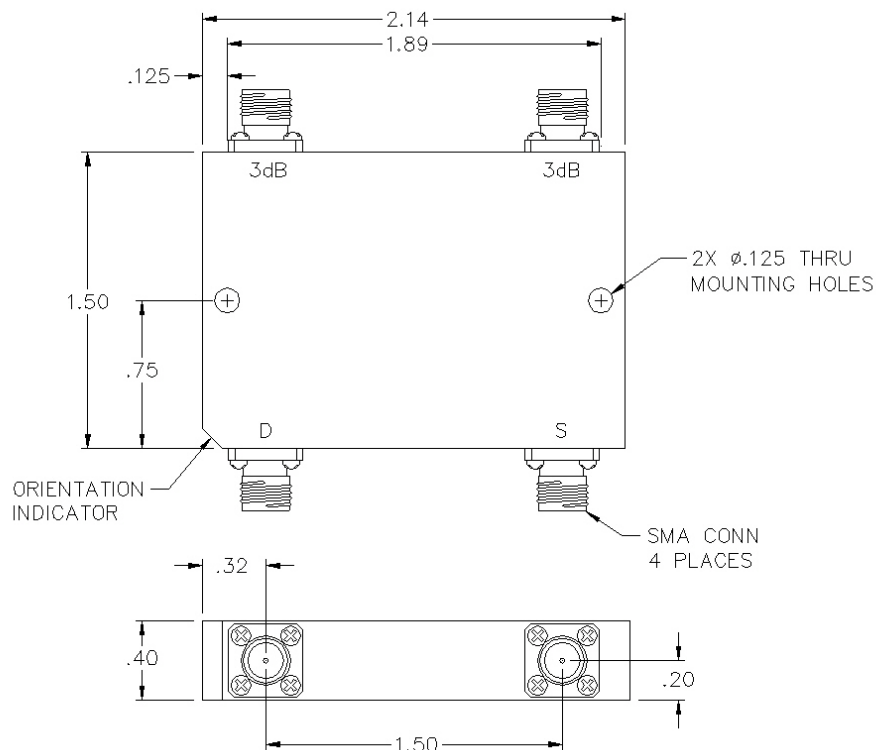


JSF-07-465-3S

4 PORT 3 DB SMA 180° HYBRID COUPLER



SPECIFICATIONS

Name:	JSF-07-465-3S
Frequency Range:	1.03-1.09 GHz
Insertion Loss:	0.3 dB max.
Isolation A-B:	20 dB min.
Power Rating:	10 watts max.
Amplitude Balance:	±0.4 dB max.
Phase Balance:	±3° max.
VSWR:	1.30:1 max.
Connector Type:	SMA

This is a commercial off the shelf (COTS) product.

For an equivalent product that meets DFARS materials compliance, contact sales.

All specifications are subject to change without notice at any time. Rev: 190326