

TQJ-150Q9A

4-Element Dipole Array Antennas

Technical Sheet

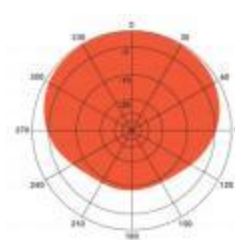


Applications

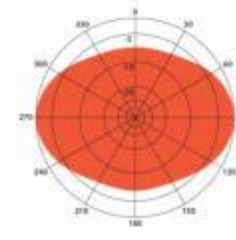
- 150MHz TETRA Communications
- Wireless Paging System
- Wireless Data transmission system
- Wireless Video System

Features

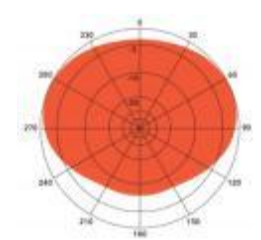
- Broad Band, Low VSWR
- High Gain
- 4-element dipole array antennas
- 300W High Power
- Pattern Adjustable Offset circular, cardioids, or bidirectional



H-plane:Gain11.2dBi



H-plane:Gain11.2dBi



H-plane:Gain10.6dBi

1/4Wl.spacing from tower 1/2Wl.spacing from tower

3/8Wl.spacing from tower

Specifications

Model	TQJ-150Q9A
Freq.Range -MHz	144~174
Bandwidth -MHz	30
Gain (dependent on pattern)	8.15~11.2dBi
Ver.Beamwidth -°	18
VSWR	≤1.5
Impedance-Ω	50
Max.Power-W	300
Polarization	Vertical
Connector	N Female or 7/16DIN(OPT.)on harness feed cable
Dimensions(H×D)-mm	4953×900
Weight(antenna+clamps)-Kg	13
Lightning Protection	DC Grounded
Maximum wind speed -m/s	60
Operating wind speed-m/s	50
Operating Temperature(°C)	-50°C to +50°C
With Support mast , (Mast Supplied by customer)	



KBT

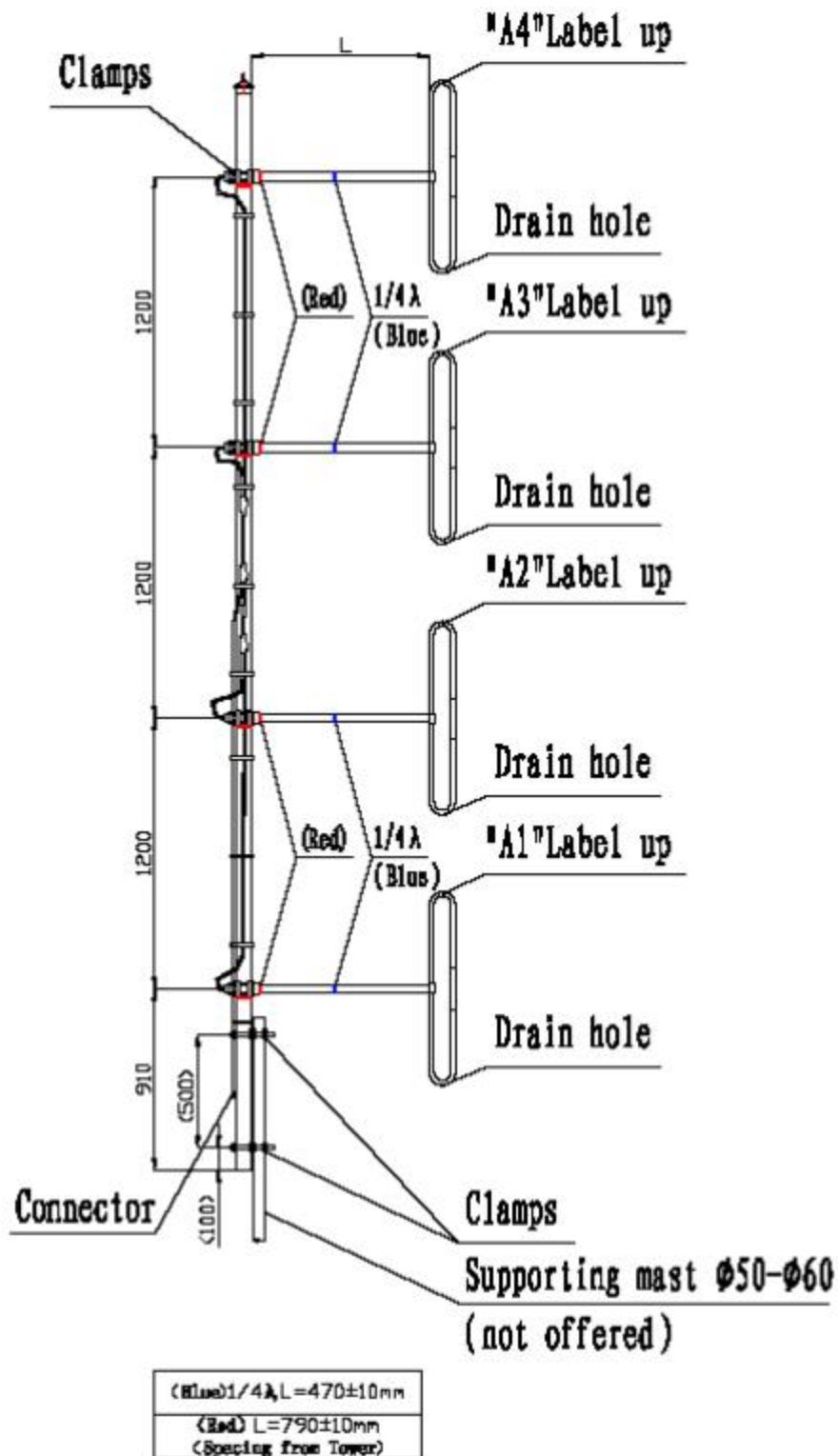
Add: No.30 Dongyang 3rd Road, Danzao Town, Nanhai District, Foshan City, Guangdong, China 528216

Tel: +86-757-88022860

Email: kbt@kenbotong.com

Web: <http://www.kenbotong.com>

Installation Sketch



mast is customer-supplied



KBT

Add : No.30 Dongyang 3rd Road, Danzao Town, Nanhai District, Foshan City, Guangdong, China 528216

Tel: +86-757-88022860

Email: kbt@kenbotong.com

Web: <http://www.kenbotong.com>