

## Indoor Left or Right Hand Circularly Polarized Patch Antennas for mounting on Wall / Ceiling or Mast.

### DESCRIPTION

- Low-profile antenna for the 380 - 470 MHz band.
- PCPI xH/TETRA/... is a Left or Right Hand Circularly Polarized patch antenna for indoor use.
- Circular polarization is chosen to avoid out-of-phase signals.
- Reduces flutter considerably.
- Specially designed for closed rooms.
- Covers approx. 50 MHz with a radiation of approx. 7 dBic.
- The antennas are carefully sealed with a discreet cover.
- The connector is placed at one side to enable mounting close to a wall or a ceiling.
- Including wall mounting bracket. PATCH-MAMO and PATCH-WAMO to be ordered separately.
- Connection also available on backside (see overleaf).



### ORDERING

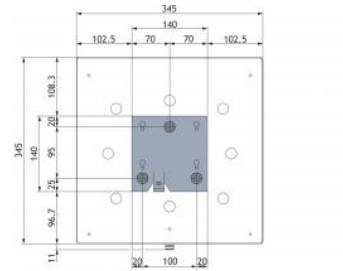
Model	Product No.	Description	Frequency
PCPI RH/TETRA/s-f	100000426	Standard Version, RHCP	380 - 430 MHz
PCPI LH/TETRA/s-f	100000425	Standard Version, LHCP	380 - 430 MHz
PCPI RH/TETRA/l-h	100000442	Standard Version, RHCP	430 - 470 MHz
PCPI LH/TETRA/l-h	100000441	Standard Version, LHCP	430 - 470 MHz
PATCH-WAMO	100000511	Bracket	
PATCH-MAMO	100000447	Bracket	
PCPI RH/TETRA/s-f-BC	100000468	Back Connector Version, RHCP	380 - 430 MHz
PCPI LH/TETRA/s-f-BC	Contact for Availability	Back Connector Version, LHCP	380 - 430 MHz
PCPI RH/TETRA/l-h-BC	Contact for Availability	Back Connector Version, RHCP	430 - 470 MHz
PCPI LH/TETRA/l-h-BC	Contact for Availability	Back Connector Version, LHCP	430 - 470 MHz

### SPECIFICATIONS

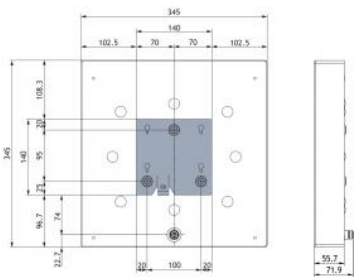
Electrical	
Model	PCPI xH/TETRA/...
Frequency	380 - 470 MHz covered by two models
Antenna Type	Left or right hand circularly polarized patch antenna
Max. Input Power	100 W
Polarisation	Circular
3 dB Beamwidth, E-Plane	80 °
3 dB Beamwidth, H-Plane	80 °
Impedance	50 Ω
Gain	7 dBic (5 dBd)
VSWR	< 2.0:1
HCM Code(s)	HCM045EA15, 043EA15
In iBwave	Yes
Mechanical	
Connection(s)	N(f)
Materials	Cover: ABS (white) Chassis: Aluminium
Colour	Marine white
Dimensions	Approx. 345 x 345 x 60 mm / 13.58 x 13.58 x 2.36"
Weight	2.3 kg / 5.07 lb
Mounting	For mounting on wall or ceiling 5mm / 0.20" (three holes) (see mounting details) or mast on 40 - 55 mm / 1.57 x 2.17" dia. mast tube.
Environmental	
Operating Temperature Range	-30°C to +75°C

DIAGRAM

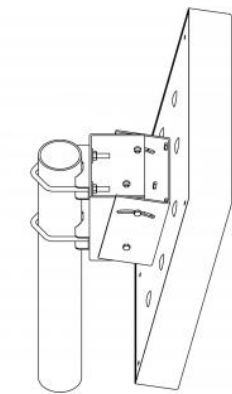
MOUNTING DETAILS (WALL MOUNTING BRACKET INCLUDED)



MOUNTING DETAILS BACK CONNECTOR VERSION X000D (WALL MOUNTING BRACKET INCLUDED)

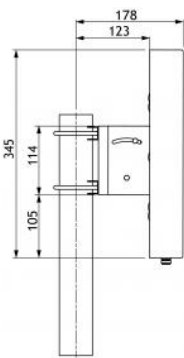


MAST MOUNTING BRACKET: PATCH-MAMO (ORDERED SEPARATELY)

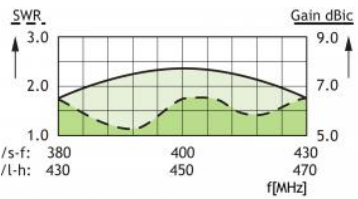


Tilt adjustable from +5°/-30°.

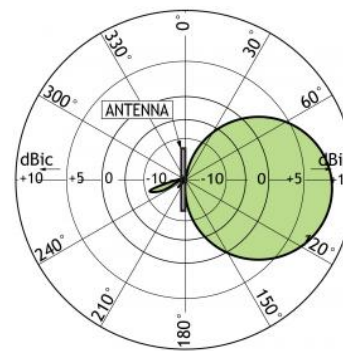
MOUNTING DETAILS (PATCH-MAMO)



TYPICAL GAIN AND SWR CURVES

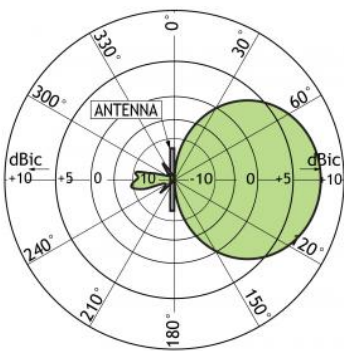


TYPICAL RADIATION PATTERN (E-PLANE)



This curve shows the radiation patterns in the vertical plane.

TYPICAL RADIATION PATTERN (H-PLANE)



This curve shows the radiation patterns in the horizontal plane (horizontal coverage).

MOUNTING DETAILS PATCH-WAMO (ORDERED SEPARATELY)

