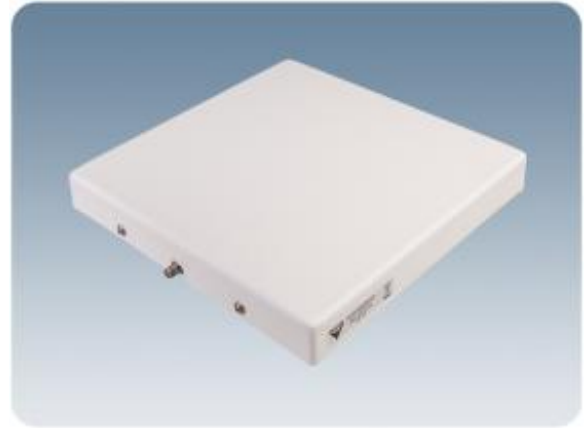


Indoor Right Hand Circularly Polarized Patch Antenna for mounting on Wall or Ceiling

DESCRIPTION

- > Low profile antenna for the 900 MHz Band.
- > PCPI 900/RHCP is a Right Hand Circularly Polarized patch antenna for indoor use.
- > Circularly polarized antenna is chosen to avoid out-of-phase signals.
- > Specially designed for closed rooms.
- > Covers approx. 80 MHz with a radiation of approx. 7 dBic.
- > Full size 2λ circular patch antenna.
- > The antenna is carefully sealed with a discreet white cover.
- > The connector is placed at one side to enable mounting close to a wall or a ceiling.



SPECIFICATIONS

Electrical	
Model	PCPI 900/RHCP
Frequency	880 - 960 MHz
Antenna Type	Right hand circularly polarized antenna
Max. Input Power	50 W
Polarisation	Circular
3 dB Beamwidth, E-Plane	80 °
3 dB Beamwidth, H-Plane	80 °
Impedance	50 Ω
Gain	7 dBic (5 dBd)
VSWR	< 2.0:1

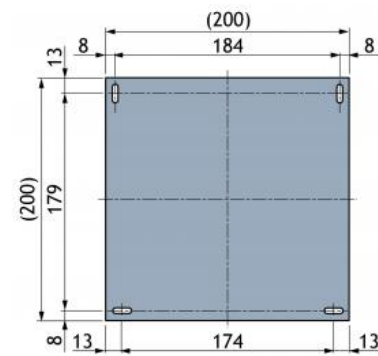
Mechanical	
Connection(s)	SMA(f)
Materials	Cover: ABS Chassis: Aluminium
Colour	Marine white
Dimensions	Approx. 204 x 204 x 28 mm
Weight	0.4 kg / 0.88 lb
Mounting	For mounting on wall or ceiling 4.5 mm dia x 20 mm (4 holes)

ORDERING

Model	Product No.
PCPI 900/RHCP	100000159

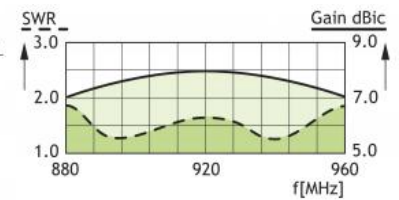
DIAGRAM

MOUNTING & PATTERN



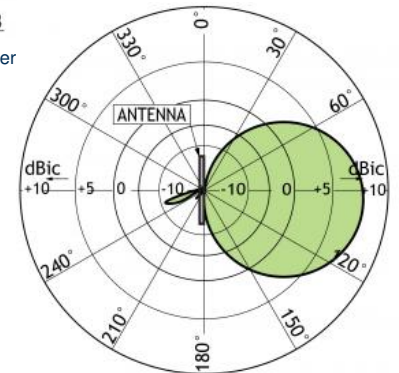
MOUNTING DETAILS (Dimensions excl. cover)

MOUNTING & PATTERN



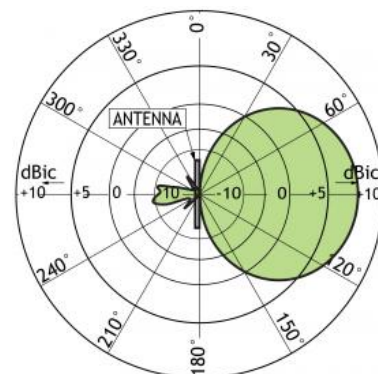
TYPICAL GAIN AND SWR CURVES

MOUNTING & PATTERN



TYPICAL RADIATION PATTERN (E-PLANE)

MOUNTING & PATTERN



TYPICAL RADIATION PATTERN (H-PLANE)