

Indoor Left or Right Hand Circularly Polarized Patch Antenna for mounting on Wall or Ceiling

DESCRIPTION

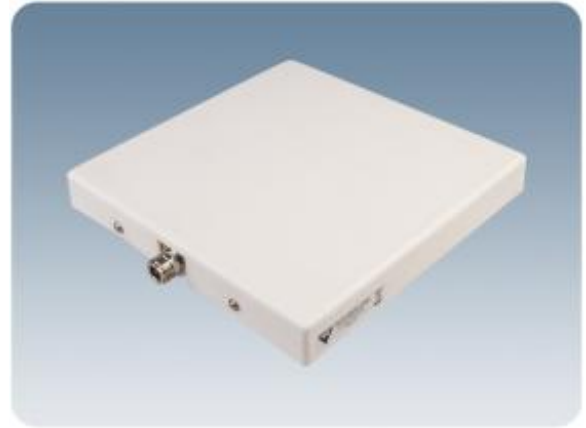
- > Low profile antenna for the 800 MHz Band.
- > PCPI 800/xH is a Left or Right Hand Circularly Polarized patch antenna for indoor use.
- > Circularly polarized antenna is chosen to avoid out-of-phase signals.
- > Specially designed for closed rooms.
- > Covers approx. 80 MHz with a radiation of approx. 7 dBic.
- > The antenna is carefully sealed with a discreet white cover.
- > The connector is placed at one side to enable mounting close to a wall or a ceiling.

SPECIFICATIONS

Electrical	
Model	PCPI 800/xH
Frequency	800 - 880 MHz
Antenna Type	Left or right hand circularly polarized patch antenna
Max. Input Power	50 W
Polarisation	Circular
3 dB Beamwidth, E-Plane	80 °
3 dB Beamwidth, H-Plane	80 °
Impedance	50 Ω
Gain	7 dBic (5 dBd)
In iBwave	Yes
Mechanical	
Connection(s)	N(f)
Materials	Cover: ABS Chassis: Aluminium
Colour	Marine white
Dimensions	Approx. 204 x 204 x 28 mm
Weight	0.4 kg / 0.88 lb
Mounting	For mounting on wall or ceiling 4.5 mm dia x 20 mm (4 holes)

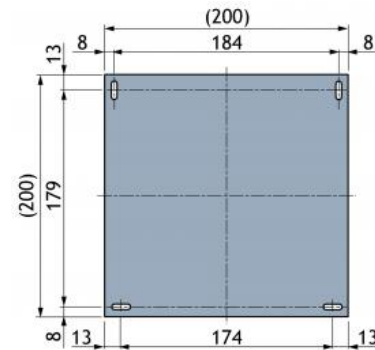
ORDERING

Model	Product No.
PCPI 800/LH	100000396
PCPI 800/RH	100000397

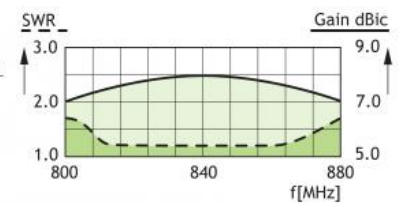


DIAGRAM

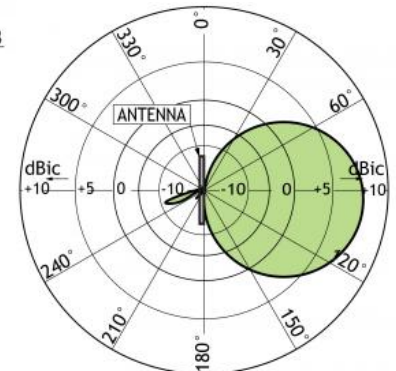
MOUNTING DETAILS (DIMENSIONS EXCL. COVER)



TYPICAL GAIN AND SWR CURVES

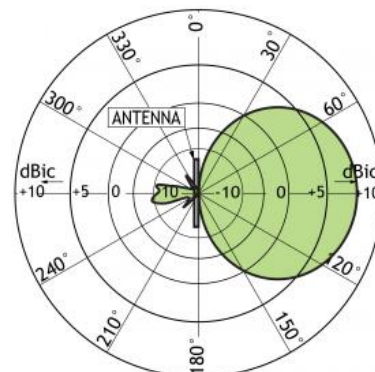


TYPICAL RADIATION PATTERN (E-PLANE)



This curve shows the radiation patterns in the vertical plane.

TYPICAL RADIATION PATTERN (H-PLANE)



This curve shows the radiation patterns in the horizontal plane (horizontal coverage).