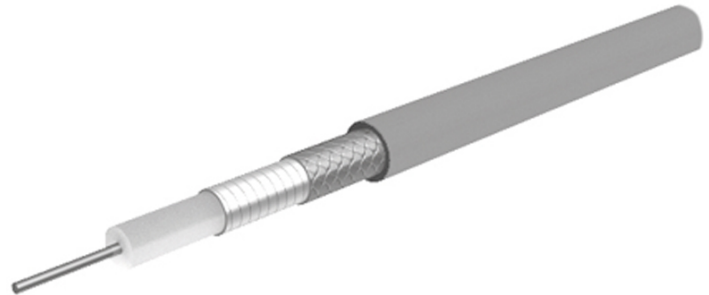


## Flexible microwave cable MULTIFLEX\_141\_CT

### Description

Multiflex: Flexible alternatives to semi-rigid microwave cables

RG402 dimension, 50 Ohm, 33 GHz, 200°C, ø3.55 mm, FEP jacket



### Technical Data

#### Construction

	Material	Detail	Diameter
Centre conductor	Aluminium, Copper clad, Silver plated	Wire	
Dielectric	Low density fluorine polymer		
Outer conductor	Copper, Silver plated	wrapped Foil, 100%	
Outer conductor	Copper, Silver plated	Braid, 84 %	
Jacket	FEP (Fluorinated ethylene propylene)	RAL 5015 - bl	4.2 mm +/- 0.1

Print: HUBER+SUHNER MULTIFLEX 141 CT 50 Ohm (PA no.)

#### Electrical Data

Impedance		50 Ω +/- 2
Operating Frequency		33 GHz
Capacitance		80 pF/m
Velocity of signal propagation		84 %
Signal delay		4 ns/m
Screening effectiveness		≥ 90 dB (up to 18 GHz)
Operating voltage		≤ 0.5 kV <sub>rms</sub> (at sea level)
Test voltage		1 kV <sub>rms</sub> (50 Hz/1 min)
Phase vs Temperature	-55°C... + 125°C	300 ppm

#### Mechanical Data

Weight		2.9 kg/100 m
Min. bending radius	static	12 mm
	repeated	
	dynamic	40 mm

#### Environmental Data

Temperature range	-65 °C ... +200 °C
Installation temperature	-20 °C... +60 °C
Halogen free	No
2011/65/EU (RoHS)	compliant
2006/1907/EC (REACH)	compliant
2000/53/EC (ELV)	compliant
2012/19/EU (WEEE)	no special marking needed

### Additional Information

#### Ordering Information

Order as MULTIFLEX\_141\_CT (available only as assembly)

#### Remarks

(For details refer to the HUBER+SUHNER RF CABLES GENERAL CATALOGUE or contact your nearest HUBER+SUHNER partner)

#### Suitable Connectors

Cable group Y27 3mm / 50 Ohm

## Flexible microwave cable MULTIFLEX\_141\_CT

**Matrix** typical Attenuation [ formula:  $(a \cdot f^{0.5} + b \cdot f)$  ] and maximum Power CW [ formula:  $(p/f^{0.5})$  ]

Coefficients:

a = 0.296

b = 0.02

f<sub>max</sub> = 33

P at 1GHz = 457

Frequency (GHz)	Nom. attenuation (dB / m) sea level 25° C ambient temperature	Nom. attenuation (dB / ft) sea level 25° C ambient temperature	Max. CW power (W) sea level 40° C ambient temperature
1,65	0,41	0,126	356
3,3	0,6	0,184	252
4,95	0,76	0,231	205
6,6	0,89	0,272	178
8,25	1,02	0,309	159
9,9	1,13	0,344	145
11,55	1,24	0,377	134
13,2	1,34	0,408	126
14,85	1,44	0,438	119
16,5	1,53	0,467	113
18,15	1,62	0,495	107
19,8	1,71	0,522	103
21,45	1,8	0,549	99
23,1	1,88	0,574	95
24,75	1,97	0,600	92
26,4	2,05	0,624	89
28,05	2,13	0,649	86
29,7	2,21	0,673	84
31,35	2,28	0,696	82
33,0	2,36	0,719	80