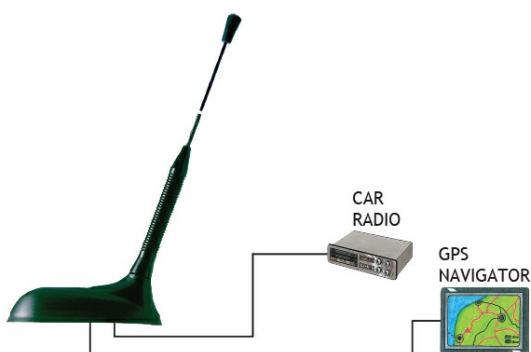


GPS Antenna with a ¼ λ Whip with a Shock Spring for the FM Band

DESCRIPTION

- External antenna whip mounted on the GPS-Combi mount.
 - Black-chromed, conical stainless steel whip.
 - Sturdy, general-purpose ¼ λ antenna in professional quality.
 - Easily removable whip for cleaning in car-washing machine.
- GPS-antenna for fixed installations.
 - Full hemispherical coverage.
 - Built-in high gain, low noise amplifier.
 - Right-Hand Circularly Polarized antenna (RHCP).
 - 5 V supply voltage (3 V respectively 12 V available on request).
 - DC supply via RF-connector.

CONNECTION DIAGRAM



SPECIFICATIONS

Electrical	
Model	GPS-C R/FM
Frequency	FM band (88 - 108 MHz)
Antenna Type	Mobile antenna
Polarisation	Vertical
Impedance	50 Ω

Mechanical	
Materials	Whip : Black-chromed, conical stainless steel Spring : Black-chromed brass Black-chromed stainless steel
Colour	Black
Height	Approx. 500 mm / 19.69 in.
Weight	Approx. 0.05 kg / 0.11 lb.
Mounting	On the GPS-Combi mount

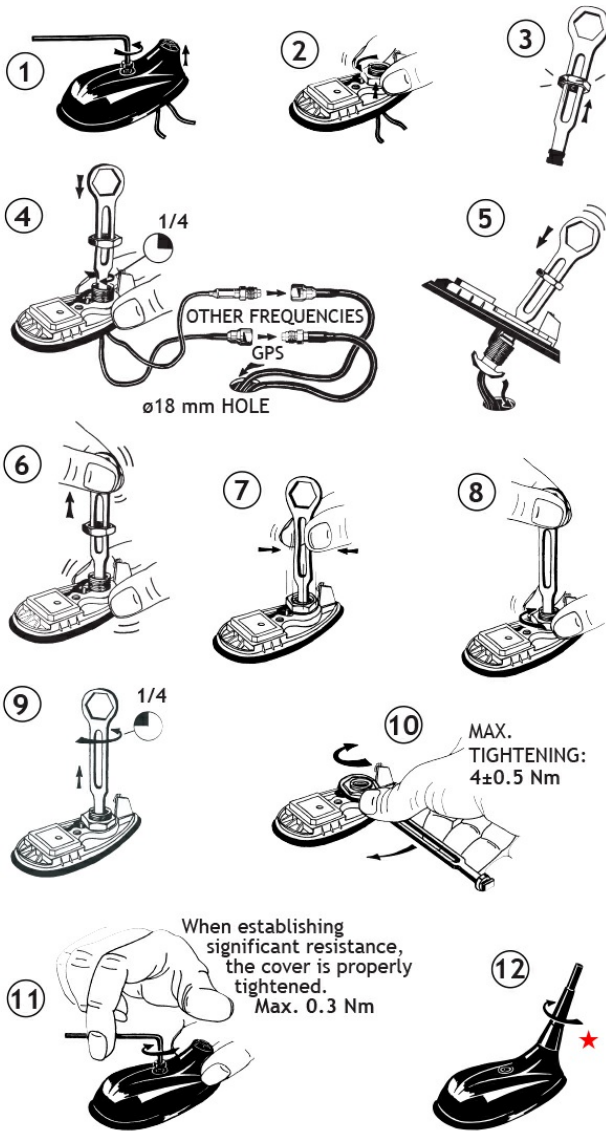


GPS Antenna	
P1dB (GPS Amplifier)	Approx. +7 dBm
Coverage (GPS)	Hemispherical
Gain (GPS)	28 dBic in axial direction (typ.)
Connection(s) (GPS)	FME(m) (male for GPS) + FME(f) (female for mobile antenna)
Mounting (GPS)	ø18.0 mm dia. hole for roof thickness up to 2.0 mm ø18.5 mm dia. hole for roof thickness 2.0 - 2.5 mm Tools for mounting included
Antenna Type (GPS)	Active patch antenna
Noise Figure (GPS Amplifier)	< 1 dB (typ.)
Cross Polar Discrimination (GPS)	> 10 dB (typ.)
Gain (GPS Amplifier)	> 30 dB (typ.)
VSWR (GPS Amplifier)	< 2.0:1
Operating Temperature Range (GPS)	-35 °C to +75 °C
Selectivity (GPS)	> 45 dB down @ ± 45 MHz
Installation Torque (GPS)	4 ± 0.5 Nm
Frequency (GPS)	1575 MHz
Weight (GPS)	Approx. 0.114 kg / 0.25 lb.
Power Supply (GPS)	5 ± 0.5 V DC (3 V resp. 12 V on request)
Current Consumption (GPS Amplifier)	0.025 mA
Dimensions (GPS)	Approx. 30 x 89 mm / 0.9 x 2.9 in.
Colour (GPS)	Black
Polarisation (GPS)	RHCP
Impedance (GPS)	50 Ω
Materials (GPS)	Cu-nite brass Stainless steel Reinforced thermoplastic

ORDERING

Model	Product No.
GPS-C R/FM	132000057

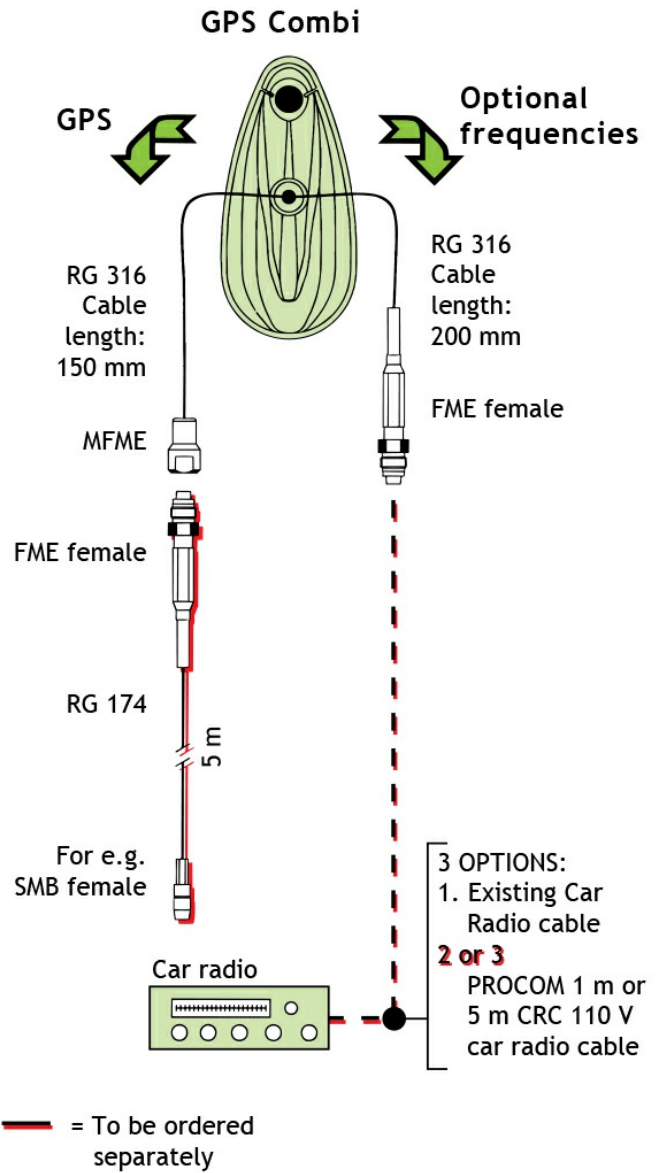
MOUNTING INSTRUCTIONS



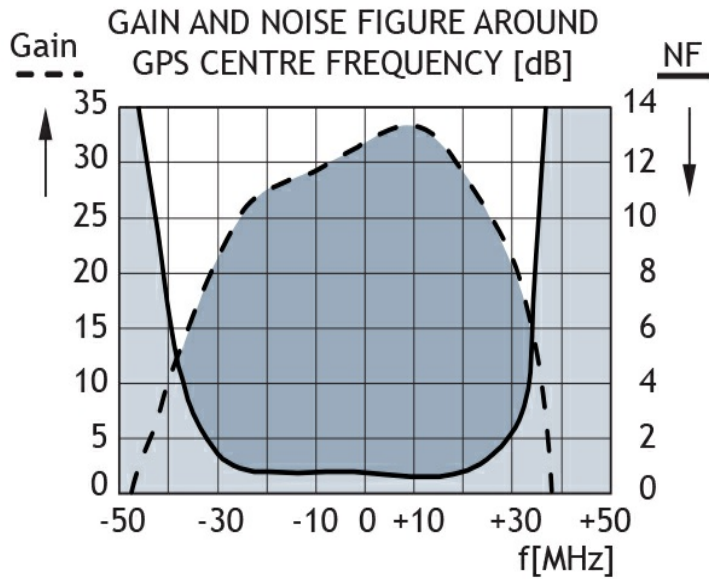
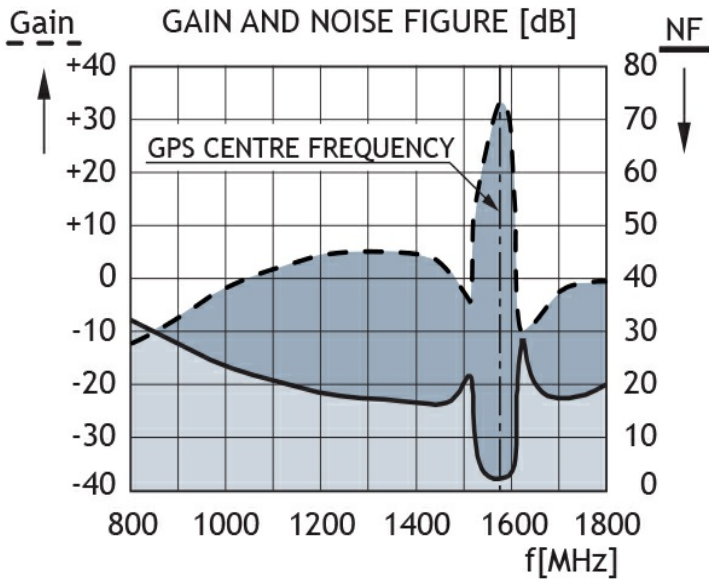
★ The whip should always be dismantled during car wash.

Do not use sealer on rubber gasket or other places.

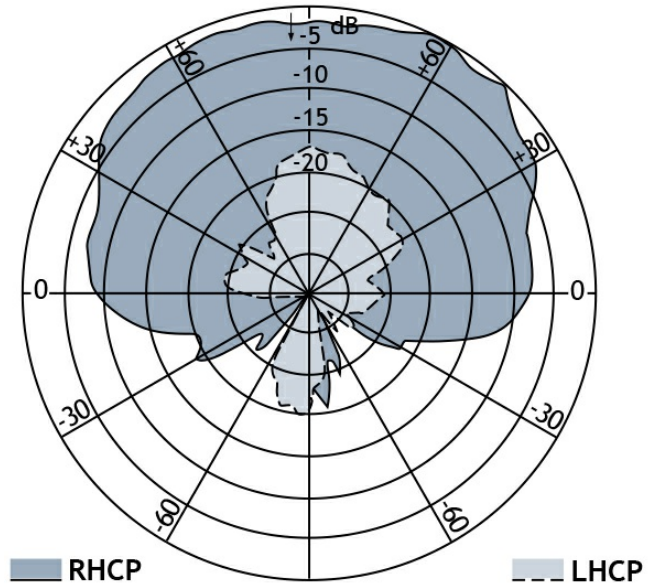
CABLE MOUNTING



TYPICAL RESPONSE CURVES



VERTICAL RADIATION PATTERN



EU AND UK DECLARATION OF CONFORMITY

Hereby Amphenol Procom declare that the product type GPS-C R/FM is in compliance with EU Directive 2014/53/EU and the UK Radio Equipment Regulations 2017 (S.I. 2017 No. 1206). The full text of the Declaration of Conformity is available at:

<https://amphenolprocom.com/images/shop/catalog/pdf-for-catalogues/Declaration-of-Conformity-GPS-C-2.pdf>