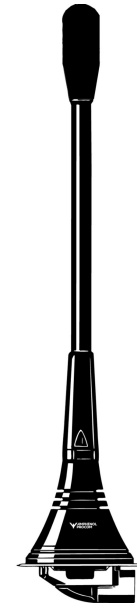


## Unity Gain $\frac{1}{4}$ $\lambda$ Mobile Antenna for the 450 MHz Band

### DESCRIPTION

- > 0 dB mobile antenna with silicone covered flexible steel wire whip.
- > Type MU 7-LX/s covers 370 – 410 MHz  
Type MU 7-LX/l covers 406 – 440 MHz  
Type MU 7-LX/h covers 430 – 470 MHz  
– no tuning required.
- > Stainless steel LX-mount – professional quality in elegant and smooth design.
- > Especially suited for roof-mounting.
- > Provided with FME-connection (supplied without cable).
- > Bendable section in mount for adjustment of whip (tiltable 15° by hand).
- > Installation with access from the outside only (requiring an 18 mm dia. hole).



### SPECIFICATIONS

Electrical	
Model	MU 7-LX/...
Frequency	450 MHz band covered by three models
Antenna Type	$\frac{1}{4}$ $\lambda$ mobile antenna
Max. Input Power	100 W
Polarisation	Vertical
Impedance	50 $\Omega$
VSWR	$\leq 1.3:1$ @ f.res.
Bandwidth	$\geq 40$ MHz
Gain (EIA RS-329-1)	0 dB
Mechanical	
Materials	Whip: Steel wire covered with silicone tubing Black-chromed brass Mount: Stainless steel Brass Environment-proof plastics
Cable	FME-cable to be ordered separately
Installation Torque	3.5 Nm max.
Colour	Black
Height	Approx. 160 mm / 6.30 in.
Weight	Approx. 0.045 kg / 0.10 lb.
Mounting	18 mm dia. hole

### ORDERING

Model	Product No.	Frequency
MU 7-LX/s	130001077	370 - 410 MHz
MU 7-LX/l	130001079	406 - 440 MHz
MU 7-LX/h	130001078	430 - 470 MHz

**INSTALLATION**

The LX-mount is especially suited for roof-mounting. It is recommended to mount the antenna at the centre of the roof to ensure the best omnidirectional coverage. Mounting can take place in an 18 mm dia. hole with access from the outside only.

When cleaning the car in car-washing machines, the whip should be removed – a 9 mm fork spanner can be used. After wash, the whip is refitted and tightened lightly with the spanner.

The mount is equipped with a bendable section ( $\pm 15^\circ$ ) to make it possible to adjust the antenna to an upright position.

**PLEASE NOTE**

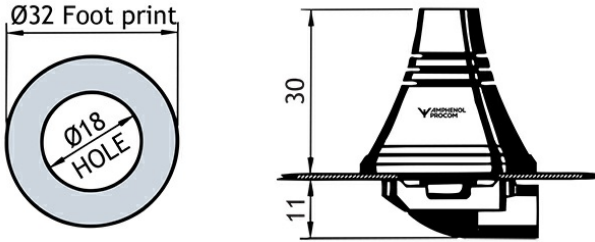
When tightening the revolving nut (see picture 4), special care must be taken to keep the spanner in the correct position.

**3. TUNING**

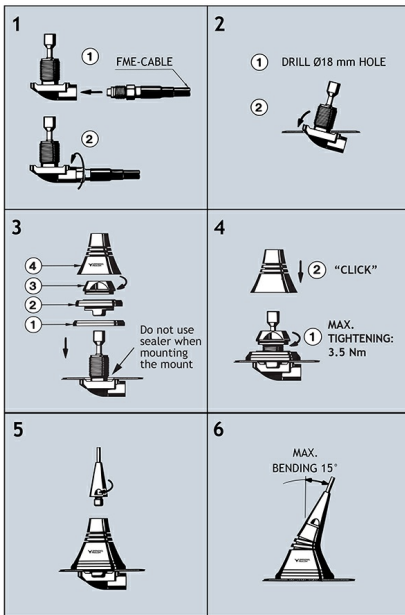
The antenna is delivered factory-tuned and requires no further tuning.

**1. INSTALLATION DIMENSION**

**LX-MOUNT**



**2. INSTALLATION STEPS**



Do not use sealer on rubber gasket or other places.

