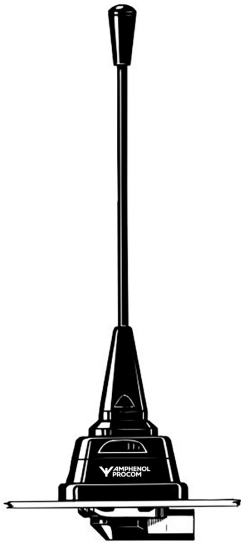


Unity Gain ¼ λ Mobile Antenna for the 450 MHz Band

DESCRIPTION

- Black-chromed stainless steel whip.
- Type MU 1-ZG/s covers 370 – 410 MHz  
Type MU 1-ZG/l covers 406 – 440 MHz  
Type MU 1-ZG/h covers 430 – 470 MHz  
– no tuning required.
- Stainless steel ZG-mount with M8-thread whip-fastening system.
- Simple mounting exclusively with access from the outside.
- Choice between two connection principles:
  - ZG-mount: FME-connection (supplied without cable).
  - ZGP4-mount: Permanently attached 4 m cable terminated with FME-connector.



SPECIFICATIONS

Electrical	
Model	MU 1-ZG/...
Frequency	450 MHz-band covered by three models
Antenna Type	Mobile whip antenna
Max. Input Power	100 W
Polarisation	Vertical
Impedance	50 Ω
VSWR	≤ 1.2 @ f. res.
Bandwidth	≥ 45 MHz @ VSWR ≤ 1.5
Gain (EIA RS-329-1)	0 dB
Mechanical	
Materials	Whip : Stainless steel and brass, black-chromed Mount : Black-chromed brass Weather- and shockproof plastics Stainless steel
Installation Torque	7.5 ±1 Nm
Colour	Black
Height	Approx. 180 mm / 7.09 in.
Weight	ZG-version : Approx. 90 g / 0.2 lb. ZGP4-version : Approx. 230 g / 0.51 lb.
Mounting	21 mm dia. hole

ORDERING

Model	Product No.	Description	Frequency
MU 1-ZG/s	130000884	ZG-mount with FME-system	370 - 410 MHz
MU 1-ZG/l	130000886	Same mount as above	406 - 440 MHz
MU 1-ZG/h	130000890	Same mount as above	430 - 470 MHz
MU 1-ZGP4/s	130000887	ZG-mount with 4 m cable and FME-connector	370 - 410 MHz
MU 1-ZGP4/l	130000888	Same mount as above	406 - 440 MHz
MU 1-ZGP4/h	130000889	Same mount as above	430 - 470 MHz

THE WHIP IS COMPATIBLE WITH ALL BELOW MOUNTS



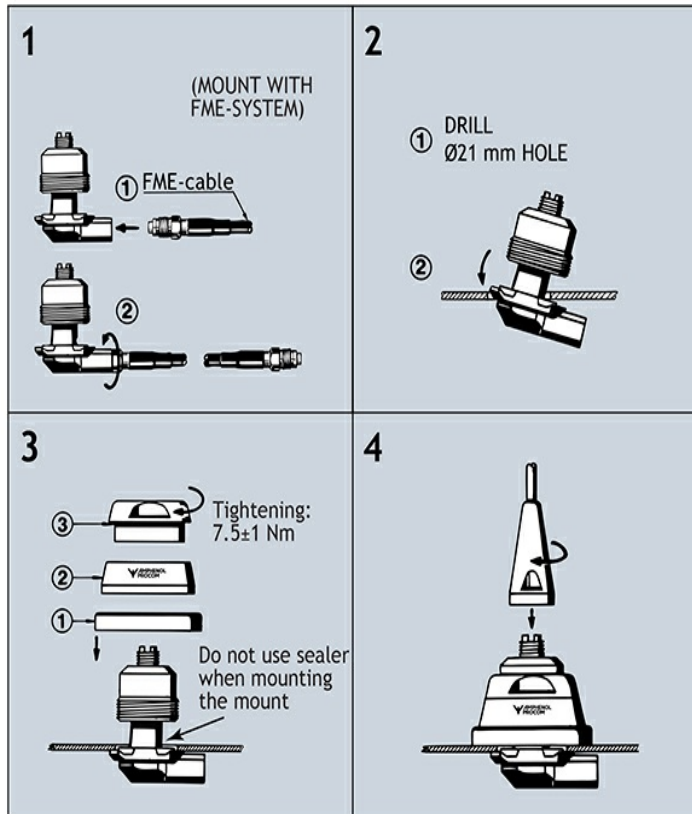
## INSTALLATION

This antenna should always be mounted on the car roof to ensure best omnidirectional coverage. The antenna is provided with our type ZG-mount for mounting from the outside in a 21 mm dia. hole.

The ZG-mount is provided with an M8 x 1 thread mount system. This construction meets the demand for a low-profile mobile mount with a slim appearance and with protection against theft of the antenna whip.

When cleaning the car in car-washing machines, the whip is easily removed using a spanner, size 12 mm. The whip is refitted again by screwing it onto the thread stud and tightening it with the spanner.

## 2. INSTALLATION STEPS



Do not use sealer on rubber gasket or other places.

## 3. TUNING / MODEL CONVERSION

- The antenna is delivered factory-tuned and requires no further tuning.
- To convert an MU 1-ZG/s model into an MU 1-ZG/l model, cut off 15 mm of the top end of the whip.
- To convert an MU 1-ZG/l model into an MU 1-ZG/h model, cut off 8 mm of the top end of the whip.